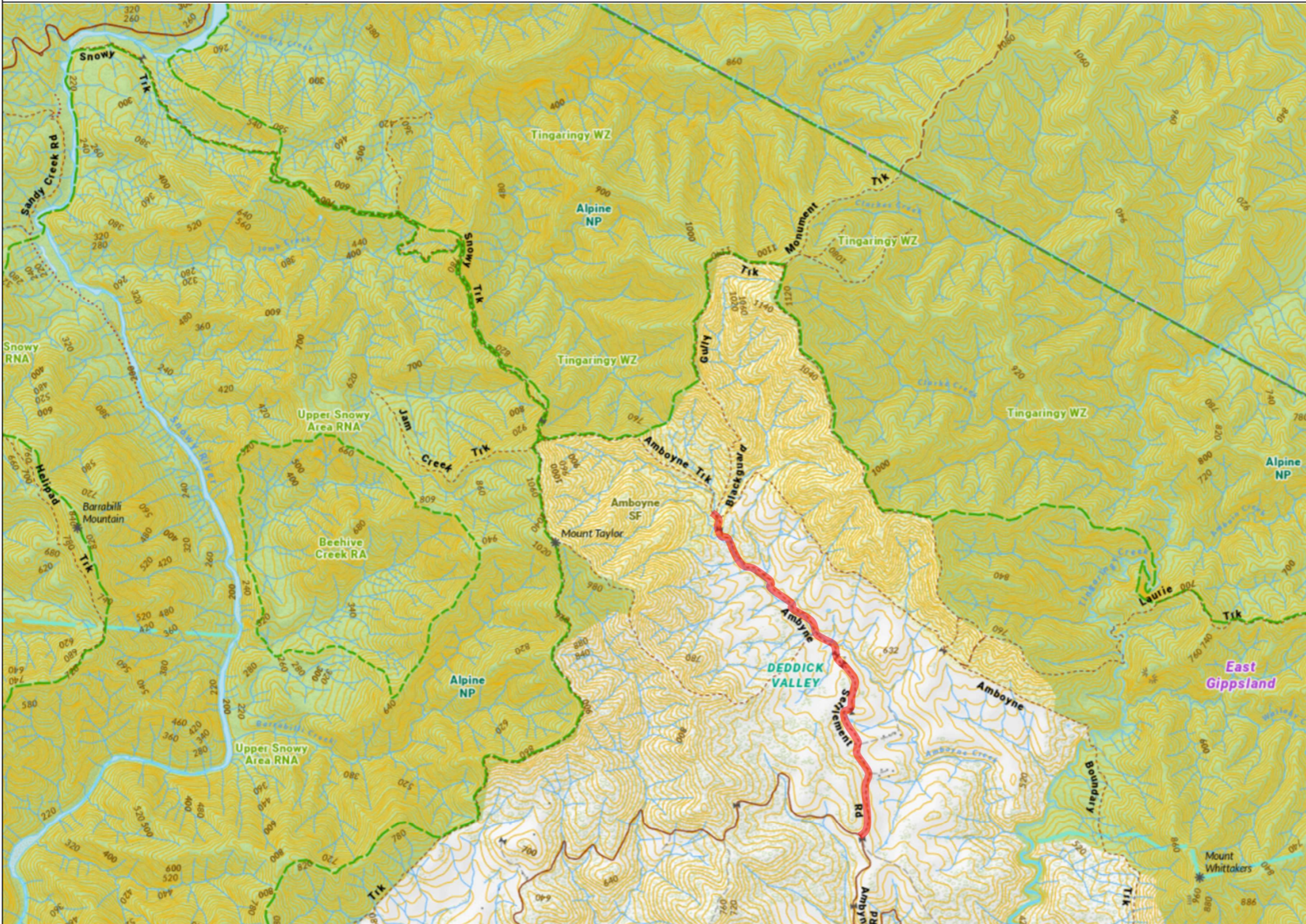


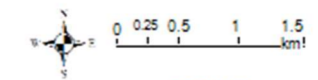
Ambyne Settlement Road – Very Poor Condition, Limited Access to Alpine National Park and Amboyne State Forest



Legend

Disclaimer: This map is a snapshot generated from Victorian Government data. This material may be of assistance to you but the State of Victoria does not guarantee that the publication is without flaw of any kind or is wholly appropriate for your particular purposes and therefore disclaims all liability for error, loss or damage which may arise from reliance upon it. All persons accessing this information should make appropriate enquiries to assess the currency of the data.

Produced on: Monday, 29 January 2024



1:50000