

# Information

Tracks have been modified in this reserve to protect the Endangered Southern Toadlet

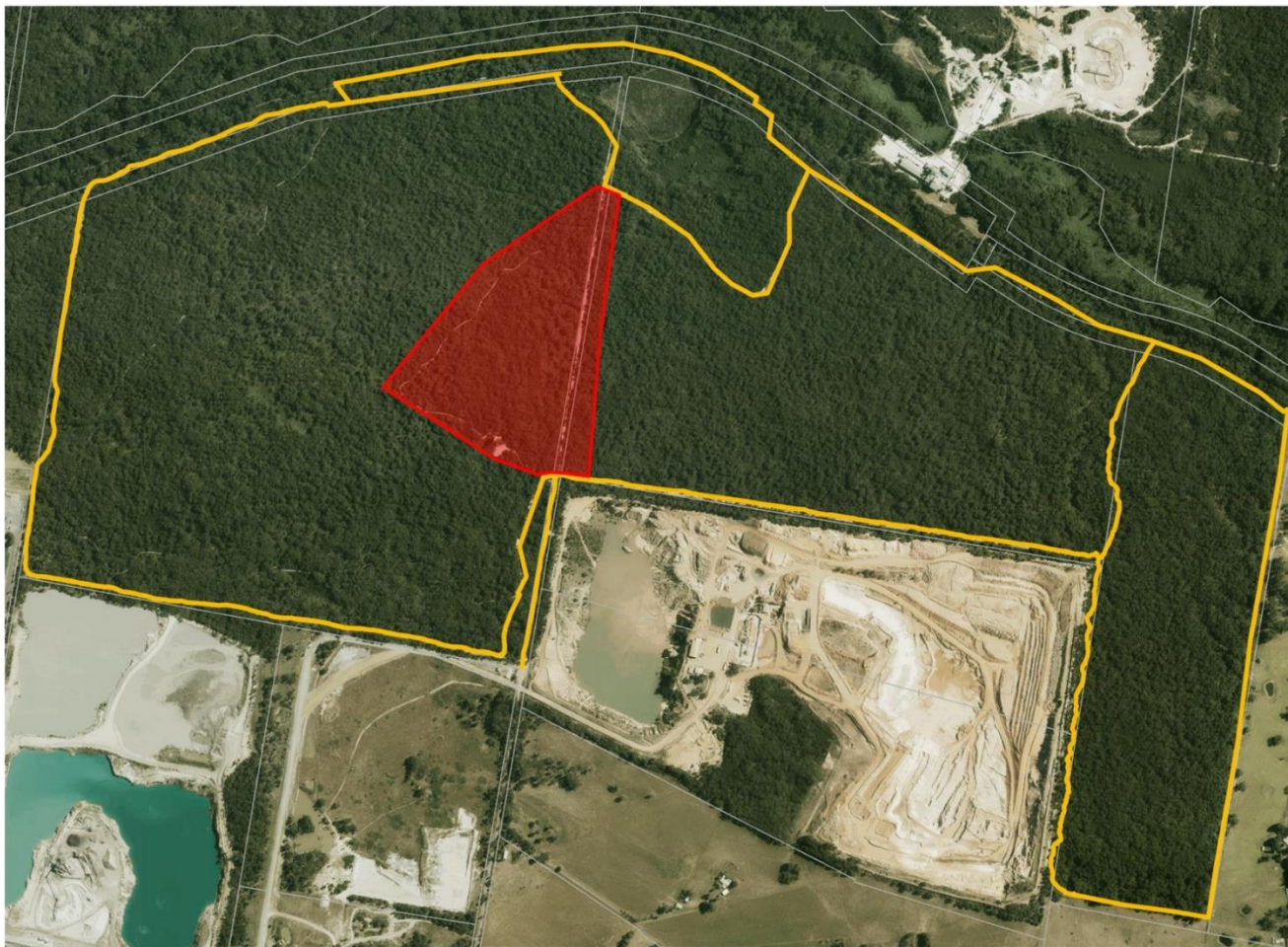


Figure 1. Southern Toadlet © P. Robertson

Produced on: April 28, 2023 12:40:57 PM

0 260.0 520.0 Meters

Disclaimer: Parks Victoria does not guarantee that this data is without flaw of any kind and therefore disclaims all liability which may arise from you relying on this information.




## Southern Toadlet are Endangered in Victoria, and they need your help!

Southern Toadlets breed from **March to June** and lay their eggs in shallow nests or burrows in low lying areas, such as the tracks in this reserve.

Parks Victoria have temporarily modified parts of the reserves to protect the breeding areas of this species.

See the map for the affected area (red) and alternative routes.

### How can you help?

- 1) If you think you have seen or heard a Southern Toadlet, upload a picture to  **iNaturalist**
- 2) Plan ahead. Keep to the management vehicle tracks and be aware of seasonal closures

*Southern Toadlets (Pseudophryne semimarmorata) conservation status is "Endangered" declared under the Victorian Government Flora and Fauna Guarantee Act 1988*