

Lerderderg State Park

Visitor Guide



The Lerderderg River has cut a rugged 300m gorge through sandstone and slate on its course southwards through the stunning Lerderderg State Park. An easy day trip from Melbourne, this park houses a wide variety of vegetation from spring wildflowers to dry open forest and caters for activities including four wheel driving, hiking, picnicking and camping.



Getting there

The park lies north of Bacchus Marsh between Blackwood and Gisborne. The main access roads are Lerderderg Gorge Road north of Bacchus Marsh and O'Briens Road running across the north of the park, south of Blackwood and Wombat Forest.

Things to see and do

Lerderderg State Park and the adjoining Wombat State Forest area contain hazardous terrain that can be difficult to navigate. High quality maps, with excellent topographical information, are needed to plan walking and 4WD touring. Maps are available for sale from outdoor activity businesses.

Walking



Mackenzies Flat to Grahams Dam – 3km, 1 hour return

Follow the gentle track beside the river upstream from Mackenzies Flat Picnic Area to Grahams Dam. Parks Victoria does not recommend swimming in streams and waterways due to hidden debris, deep cold water and slippery rocks.



Blackwood Mineral Springs to Shaws Lake to Sweets Lookout – 3.5km, 2 hours return

An easy walk which starts near the caravan camping area and passes historical features typical of the Blackwood area.



O'Briens Crossing to Byers Back Track to The Tunnel – 3km, 1.5 hours return

This harder walk follows an old water race around the steep Lerderderg valley above the river. At the second cross track, turn right and descend steeply to arrive opposite The Tunnel. Longer walks, such as the Great Dividing Trail's Lerderderg Track, are available in the park, but they require planning and preparation using detailed maps as mentioned above.

Picnicking and camping

Mackenzies Flat Picnic Area in the south of the park is a very popular spot for a picnic. Camping and dogs are not permitted.

The smaller Shaws Lake picnic area is near Blackwood.

O'Briens Crossing Picnic Area allows dogs on lead however fires are not permitted here.

Lerderderg Campground is the only designated drive-in campground in the park. Campers should be prepared for a basic bush camping experience and be self-sufficient with drinking water. Campfires must be in the fireplaces provided. Walk-in camping is permitted in the Conservation Zone, but solid fuel fires are not permitted. Refer to the map overleaf.

Car touring and four wheel driving

O'Briens Crossing and Golden Point, near Blackwood, are the only two river crossings in the park suitable for two wheel drive vehicles. O'Briens Road is a scenic drive crossing the park's northern area. It is unsealed but suitable for two wheel drive vehicles.

Caring for the park

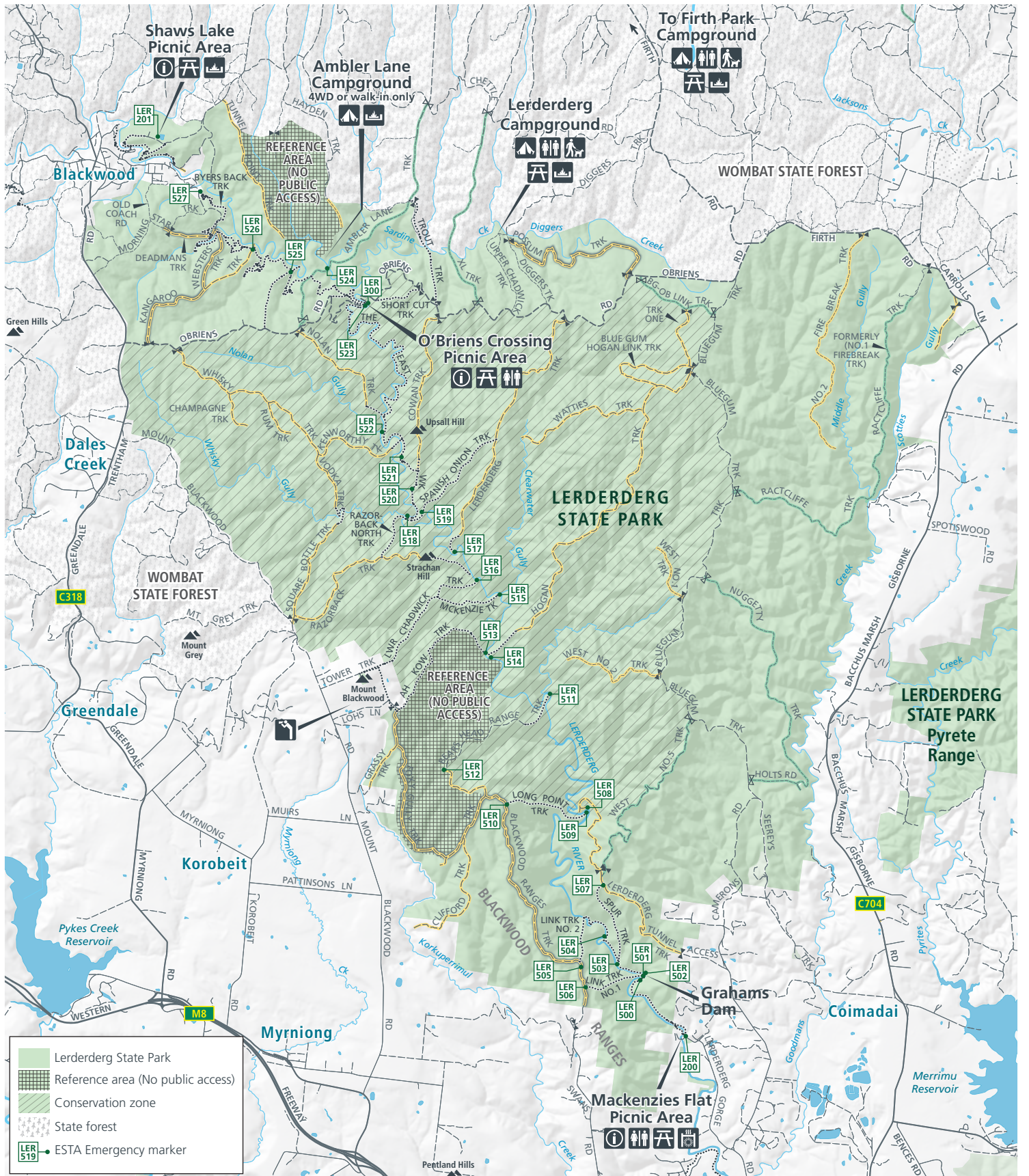
Help us look after your park by following these guidelines:

- Firearms, cats and other pets are not permitted in the park.
- All plants, animals, other natural features and cultural sites are protected and must not be disturbed or removed.
- Feeding wildlife is bad for their health. Penalties apply. Store all food securely and properly dispose of all rubbish, including food scraps.

Be prepared and stay safe

For emergency assistance call Triple Zero (000). If there is a green emergency marker sign near you, read the information on the marker to the operator. Lerderderg State Park is in the Central fire district. Bushfire safety is a personal responsibility. Anyone entering parks and forests during the bushfire season needs to stay aware of forecast weather conditions. Check the Fire Danger Rating and for days of Total Fire Ban at www.emergency.vic.gov.au, on the VicEmergency smartphone app or call the VicEmergency Hotline on 1800 226 226. No fires may be lit on Total Fire Ban days. On Catastrophic Fire Danger Rating days this park will be closed for public safety. Warnings signs may be erected, but do not expect a personal warning.

Check the latest conditions at www.parks.vic.gov.au or by calling 13 1963.



- Information
- Toilets
- Camping area
- Picnic
- BBQ (Electric)
- Fireplace
- Lookout
- Dogs permitted
- Freeway/Highway
- Main road
- Sealed road
- Unsealed road
- Main through road in park
- 4WD track
- Mgmt. vehicles/walkers only
- Mgmt. vehicles/Horseshooting, Cycling & Walking
- Seasonal closure
- Walking track
- Gate
- Gate (seasonal)