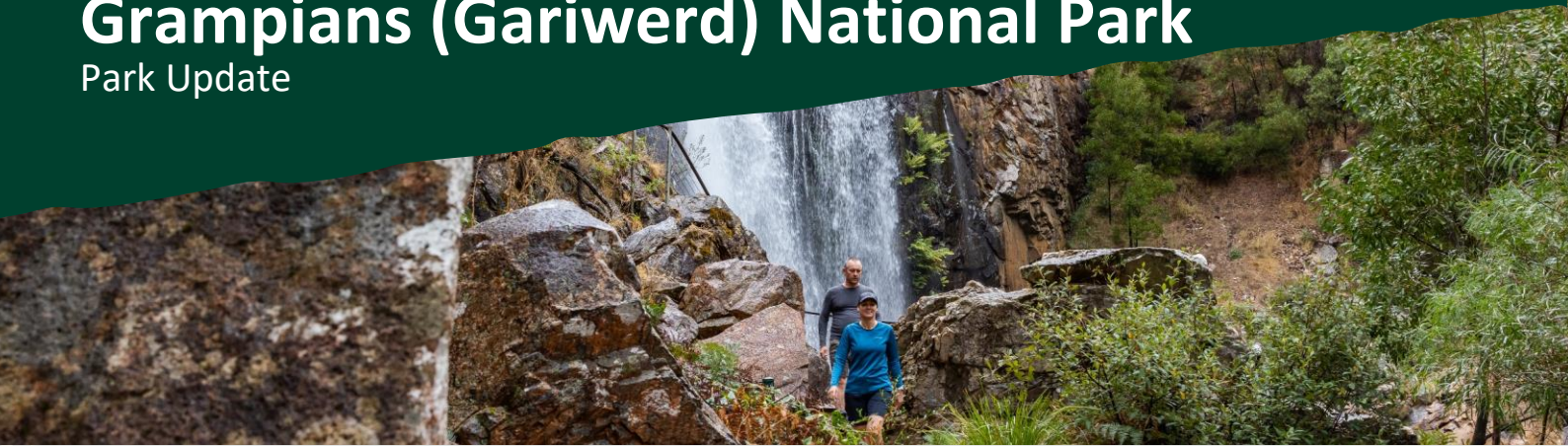


Grampians (Gariwerd) National Park

Park Update



Friday 4 July 2025

Grampians (Gariwerd) National Park Update – What's Open, What's Closed

During the summer of 2024/2025 the central, southern and western areas of the Grampians (Gariwerd) National Park were impacted by multiple bushfires. Since then, a staged re-opening has commenced and many popular visitor areas have re-opened in the Northern, Wonderland and Southern areas of the park. However, in the Mount William, Victoria Range, Victoria Valley and Wallaby Rocks areas; many visitor sites and roads remain closed.

What is open?

Day Visitor Sites and Walking Tracks

Northern Grampians

Mount Zero (Mura Mura) walk
Mount Stapylton (Gunigalg) walks
Hollow Mountain (Wudjub Guyun)
Gulgurn Manja and Ngamdjidj Rock Art Shelters
Golton Gorge walk
Beehive Falls and Briggs Bluff walks
MacKenzie Falls River and Fish Falls walks
Mt Difficult (Gar) walk and Waterfalls of Gar
Heatherlie Quarry and Zumsteins Picnic Ground

Central Grampians, Wonderland Range & Halls Gap

All walks to the Pinnacle from Halls Gap, Wonderland and Sundial carparks
Mount Rosea walk
Lakeview Lookout loop
Venus Baths and Grand Canyon walks
Tunnel Track
Terraces Fireline
Chatauqua Peak (Bim) and Clematis Falls walks
Bullaces Glen walk, Silverband Falls walk
Boronia Peak and Fyans Creek (Barri Yalug) loop walks
Boroka/ Reed Lookouts and Balconies walk
Wartook Lookout walk
MacKenzie Falls and Broken Falls walks

Southern Grampians

Mt Sturgeon (Wurgarri) & Piccaninny (Bainggug) walk
Mt Abrupt (Mud-dadjug) and Signal Peak walk
Kalymna Falls walk (southeast)

Grampians Peaks Trail and Hike-in Campgrounds

North Section N1-N4 Mt Zero to Halls Gap

Central Section Halls Gap to Borough Huts Campground (includes Section C1, Bugiga Hike-in campground and trail access from Sundial Carpark)

South Section - Griffin Trailhead to Dunkeld (includes Sections S3-S4 and 2WD access from Grampians Tourist Rd to Griffin Trailhead via Griffin Fireline)

Campgrounds

Borough Huts
Jimmy Creek
Wannon Crossing
Kalymna
Smiths Mill Campground
Stony Creek Group Campground
Coppermine 4WD Campground
Troopers Creek, Stapylton and Plantation Campgrounds

Roads and 4WD Tracks

Most public roads are open in the unaffected areas of the park. Grampians Tourist Road (Halls Gap to Dunkeld) Silverband Road and Victoria Valley Road are also open. For an up-to-date report on roads go to the Parks Victoria Grampians (Gariwerd) website: [Grampians \(Gariwerd\) National Park](https://www.parks.vic.gov.au/grampians-gariwerd-national-park)

Rock Climbing and Bouldering

The following Designated Rock Climbing Areas are open:
Gunigalg/Gar 1-50; 108-112
Halls Gap 51-82; 113-116
For detailed information regarding access to rock climbing and bouldering sites go to Parks Victoria Rock Climbing in Gariwerd:
[Rock Climbing in Gariwerd](#)

What is closed?

Day Visitor Sites, Walking Tracks and Campgrounds

Wonderland, Serra and Mt William Ranges

Sundial Peak

Mt William Summit and Mt William Plateau (including walks and climbing sites in Mt William and Serra Ranges, north of Cassidy Gap)

Grampians Peaks Trail

Central section (C3-C5) Borough Huts to Jimmy Creek (includes Barri Yalug, Duwul and Durd Durd Hike-in Campgrounds)

Jimmy Creek to Southern section Griffin Trailhead (includes Section S1 and Yarram and Wannon Hike-in Campgrounds)

Victoria Valley, Victoria Range and Wallaby Rocks

All walks and visitor areas including Paddys Castle, Chimney Pots and Fortress walks, Manja shelter, Billimina shelter, Red Rock picnic area and Boreang, Strachans and Buandik Campgrounds

Roads and 4WD Tracks

It is expected that most of the roads within the National Park will reopen to the public by mid to late July. There will be longer term closures required for some roads, where significant damage has occurred and further essential works are required.

Closures to seasonal tracks also apply from June 12 to Oct 30, 2025.

For up-to-date road closures go to the Parks Victoria Grampians (Gariwerd) website.

[Grampians \(Gariwerd\) National Park](#)

Rock Climbing and Bouldering

The following Designated Rock Climbing Areas are closed due to fire impacts:

Halls Gap 83-91

Mt William (Duwul)/Serra Range) 117-121

Billawin South 92-107

For detailed information regarding access to rock climbing and bouldering sites go to Parks Victoria Rock Climbing in Gariwerd:

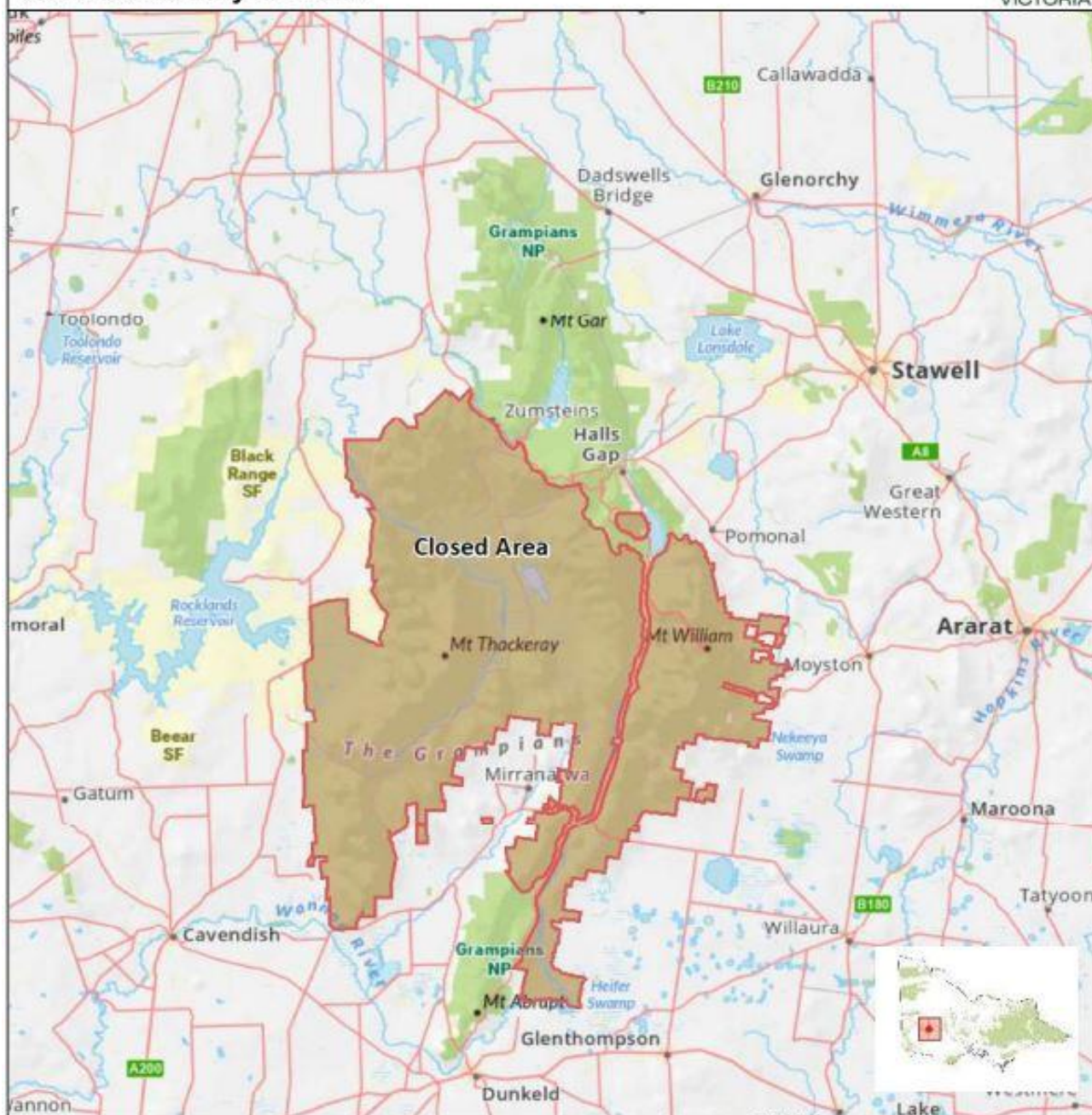
[Rock Climbing in Gariwerd](#)

Stay safe and prepared

Do not enter closed fire affected areas, they are fragile and unstable with significant hazards such as falling trees and damaged tracks and roads.

For further Park Information, visit **Brambuk the National Park and Cultural Centre in Halls Gap**, a local Visitor Information Centre, call Parks Victoria 13 1963 or go to the Grampians (Gariwerd) National Park website: [Grampians \(Gariwerd\) National Park](#)

Grampians Gariwerd National Park Closed Area July 4th 2025



Legend

Closed Area - Fire Impacted



Open Park Visitor Area



Large bushfires in Summer 2024/25 caused widespread damage to Grampians (Gariwerd) National Park. Many popular visitor areas have re-opened, however some roads and visitor sites remain closed for safety and to allow for Parks Victoria to complete repairs.

For an up to date list of what's open and closed, visit the Grampians page on Parks Victoria website, parks.vic.gov.au or phone 13 1963.

Disclaimer: This map is a snapshot generated from Victorian Government data. This material may be of assistance to you but the State of Victoria does not guarantee that the publication is without flaw of any kind or is wholly appropriate for your particular purposes and therefore disclaims all liability for error, loss or damage which may arise from reliance upon it. All persons accessing this information should make appropriate enquiries to assess the currency of the data.

Produced on: Tuesday 1st June 2025

