

# Grampians (Gariwerd) National Park

## Park Update – Fire Recovery



Edition 2

## Grampians (Gariwerd) National Park Update – 17 April 2025

Over summer, several large bushfires impacted the Serra and Mount William Ranges, Victoria Valley and the Victoria Range. However, many popular walking tracks and visitor sites were not affected by the fires and are open for visitors to enjoy.

### What is open?

#### Walking Tracks and Visitor Sites

##### Northern Grampians

Mount Zero (Mura Mura) walk  
Mount Stapylton (Gunigalg) walks  
Hollow Mountain (Wudjub Guyan)  
Gulgurn Manja and Ngamdjidj Rock Art Shelters  
Golton Gorge walk  
Beehive Falls and Briggs Bluff walks  
MacKenzie Falls River and Fish Falls walks  
Mt Difficult (Gar) walk and Waterfalls of Gar  
Heatherlie Quarry and Zumsteins Picnic Ground  
Designated climbing sites

##### Central Grampians, Wonderland Range & Halls Gap

All walks to the Pinnacle from Halls Gap, Wonderland and Sundial carparks  
Venus Baths and Grand Canyon walks  
Lakeview Lookout walk  
Chatauqua Peak (Bim) and Clematis Falls walks  
Bullaces Glen walk, Silverband Falls Walk  
Boronia Peak and Fyans Creek (Barri Yalug) loop walks  
Boroka/ Reed Lookouts and Balconies Walk  
Wartook Lookout Walk  
MacKenzie Falls and Broken Falls walks

##### Southern Grampians

Mt Sturgeon (Wurgarri) & Piccaninny (Baingugg) walk  
Mt Abrupt (Mudadjug) and Signal Peak walk  
Kalymna Falls walk (southeast)

#### Grampians Peaks Trail and Hike-in Campgrounds

- Grampians Peaks Trail: North Section N1-N4 Mt Zero to Halls Gap (also available across Wonderland Range with pick up at Sundial Carpark)
- Grampians Peaks Trail: South Section - Griffin Trailhead to Dunkeld – Pick up and drop off at Grampians Road only (Griffin Track remains closed for vehicles but open to walkers accessing GPT).

#### Campgrounds

Stapylton and Smiths Mill Campgrounds  
Coppermine 4WD Campground  
Troopers Creek and Plantation Campgrounds  
Jimmy Creek, Wannan Crossing, Kalymna Campgrounds

#### Roads and 4WD Tracks

Most public roads are open in the unaffected areas of the park. Grampians Tourist Road (Halls Gap to Dunkeld) Silverband Road and Victoria Valley Road are also open. Check the Parks Victoria website for road closures.

### What is closed?

#### Wonderland, Serra and Mt William Ranges

Sundial Peak and Rosea walks  
Borough Huts and Stony Creek Group Campgrounds  
Mt William Summit and Mt William Plateau (including walks and climbing sites in Mt William and Serra Ranges, north of Cassidy Gap)

#### Grampians Peaks Trail

Sundial Carpark to Griffin Track in the south – Central Section C1 – C5 and Southern section S1 to Griffin Track

#### Victoria Valley, Victoria Range and Wallaby Rocks

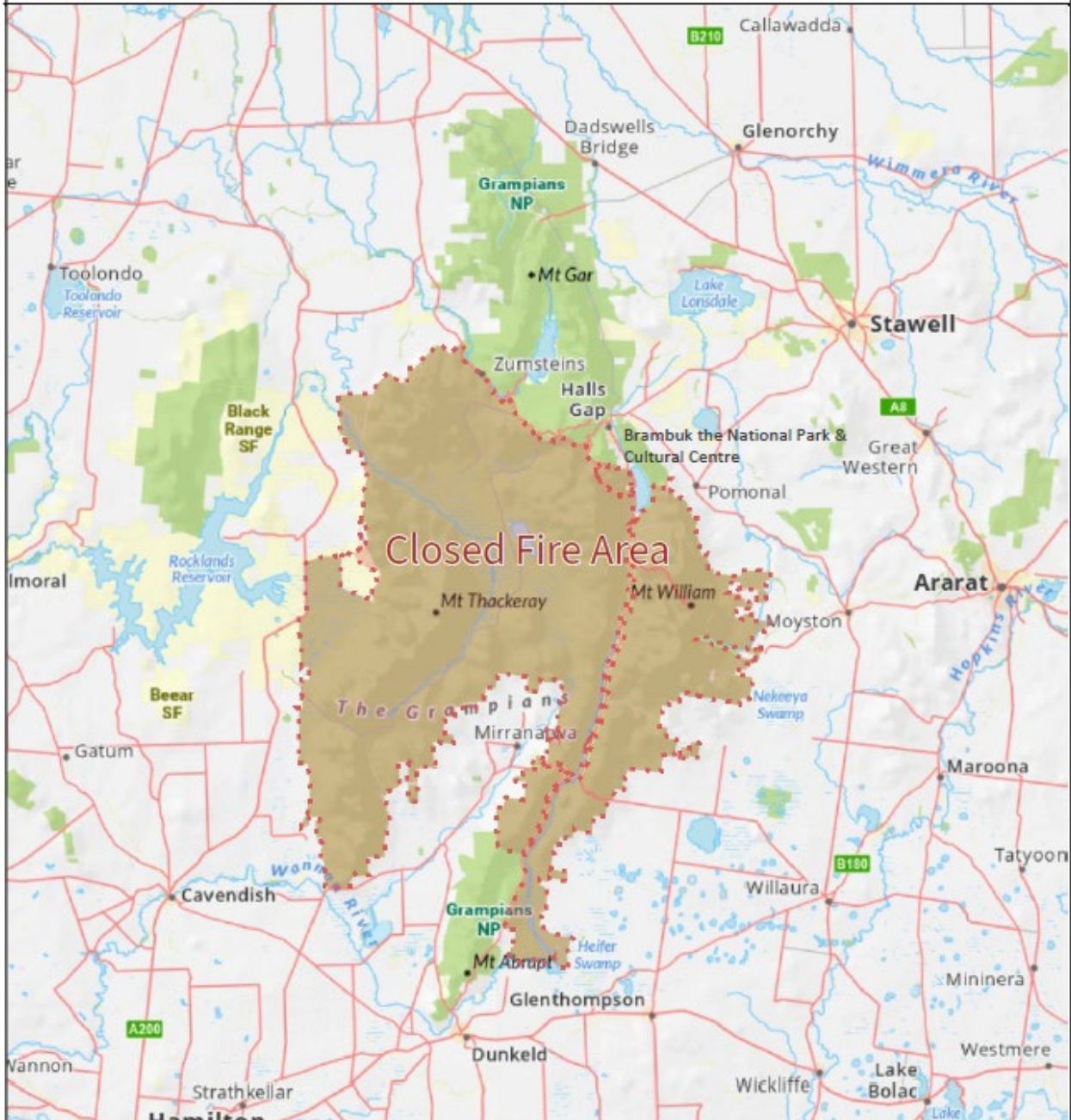
All walks, climbing sites and visitor areas including Paddys Castle, Fortress walk, Manja, Billamina, Red Rock picnic area and Boreang, Strachans and Buandik Campgrounds

**All roads and 4WD tracks are closed within the fire area with some exceptions – check [parks.vic.gov.au](https://parks.vic.gov.au)**

#### Stay safe and prepared

- Do not enter closed fire affected areas, they are fragile and unstable with significant hazards such as falling trees and damaged tracks and roads.
- For further park information, visit **Brambuk the National Park and Cultural Centre in Halls Gap**, a local Visitor Information Centre or check the Parks Victoria website [parks.vic.gov.au](https://parks.vic.gov.au).

# Grampians (Gariwerd) National Park Bushfire closure area - Easter 2025



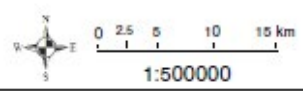
**Legend**

- Closed Fire Area
- Grampians (Gariwerd) National Park - Area Open For Easter

Access roads open in the south - Grampians Tourist Road (Halls Gap to Dunkeld), Silverband Road, Mount Victory/Northern Grampians Road, Victoria Valley Road and Victoria Point Road.

For further national park information go to Parks Victoria's website [parks.vic.gov.au](http://parks.vic.gov.au) or phone 13 1963, or visit Brambuk the National Park and Cultural Centre in Halls Gap.

Disclaimer: This map is a snapshot generated from Victorian Government data. This material may be of assistance to you but the State of Victoria does not guarantee that the publication is without flaw of any kind or is wholly appropriate for your particular purposes and therefore disclaims all liability for error, loss or damage which may arise from reliance upon it. All persons accessing this information should make appropriate enquiries to assess the currency of the data.



Produced on: Thursday, 10 April 2025