

# OFFICIAL

Red section Hattah Kulkyne National Park (HKNP) is closed for a conservation program and is signposted on each track leading into it.

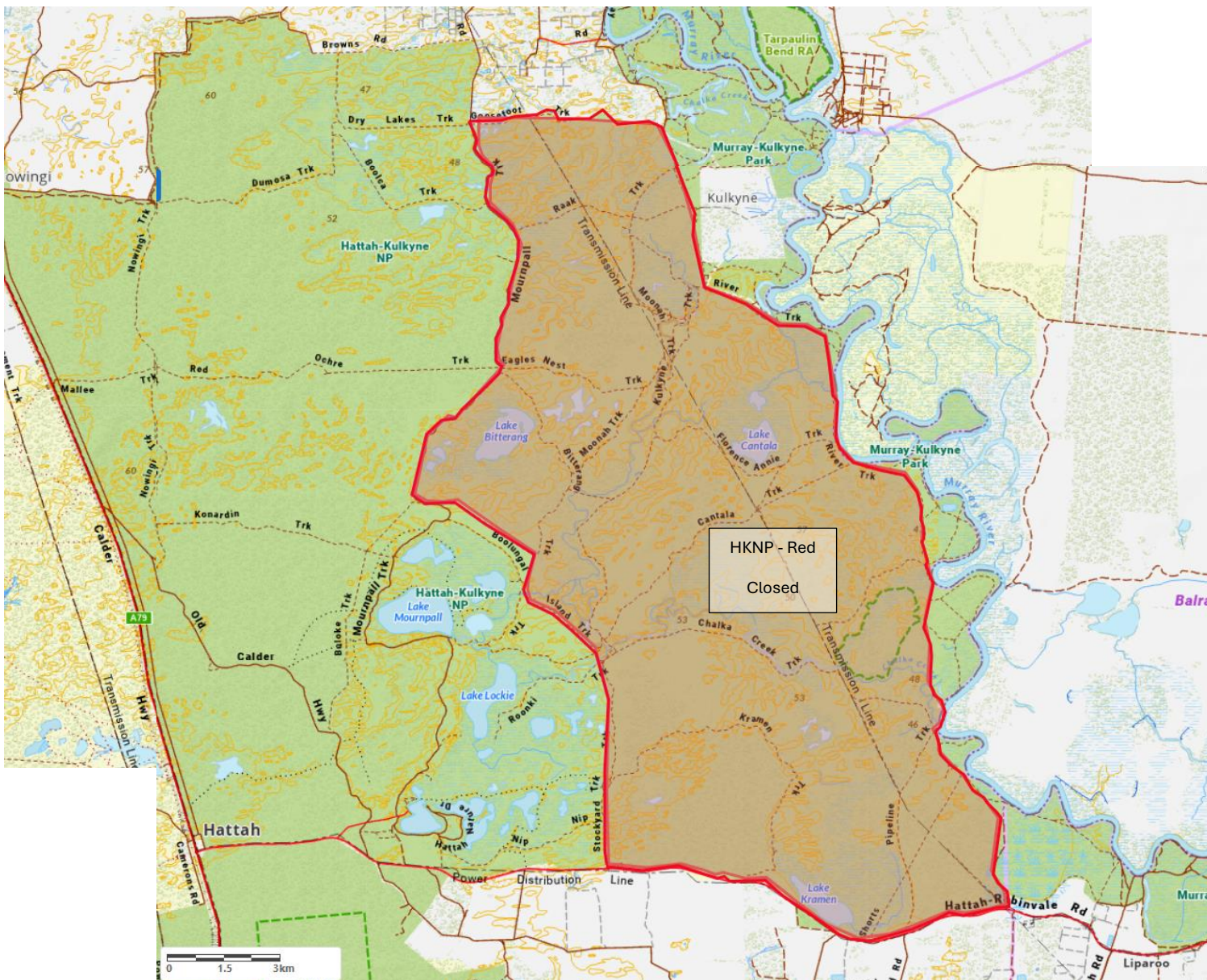
The remainder of Hattah Kulkyne National Park is open to the public including the campgrounds, however only existing bookings permitted with new bookings disabled online.

Murray Kulkyne National Park (River access) is also open. River Track is the boundary between the two areas and may be used to enter the Murray Kulkyne Park area safely.

Please do not cross into the red section.

Thank you.

Parks VIC – Hattah



# OFFICIAL