

# Planned burning in your area

Scheduled for ignition between Sunday 11<sup>th</sup> of May and Sunday 18<sup>th</sup> of May 2025

**Each year fuel management works in Victoria's public parks and forests is carried out to reduce the bushfire risk to our communities, property, and environment.**

This program will align, as much as possible, with the 2020 Loddon Mallee Bushfire Management Strategy; noting that other stakeholder groups may also make planned burn nominations.

One method is planned burning, which involves the planned use of fire under carefully managed conditions to reduce fire fuel, such as dead wood, leaf litter, bark and shrubs.

Planned burns are carried out to help slow the spread and lessen the intensity of damaging bushfires and to help plants and animals that depend on fire to survive.



Forest Fire Management Victoria includes DECCA, Parks Victoria, Melbourne Water and Vic Forests and partner, the Country Fire Authority, working together to

reduce the risk of fire on public and private land. Each burn is part of a three-year Joint Fuel Management Plan (JFMP) that outlines when and where fuel management works will take place, such as planned burning, clearing works and the construction of fuel breaks.

### When is the next planned burn?

A planned burn has been scheduled at Moonlight Flat - The Folly Track. The burn is intended to be ignited between Sunday 11<sup>th</sup> of May and Sunday 18<sup>th</sup> of May 2025, weather conditions permitting.

All planned burns will only be lit once we assess the fuel moisture and weather conditions, such as humidity, temperature and wind speed.

The decision to proceed is made on the day of the burn following monitoring of weather conditions and local fuel moisture levels.

### Smoke in your area.

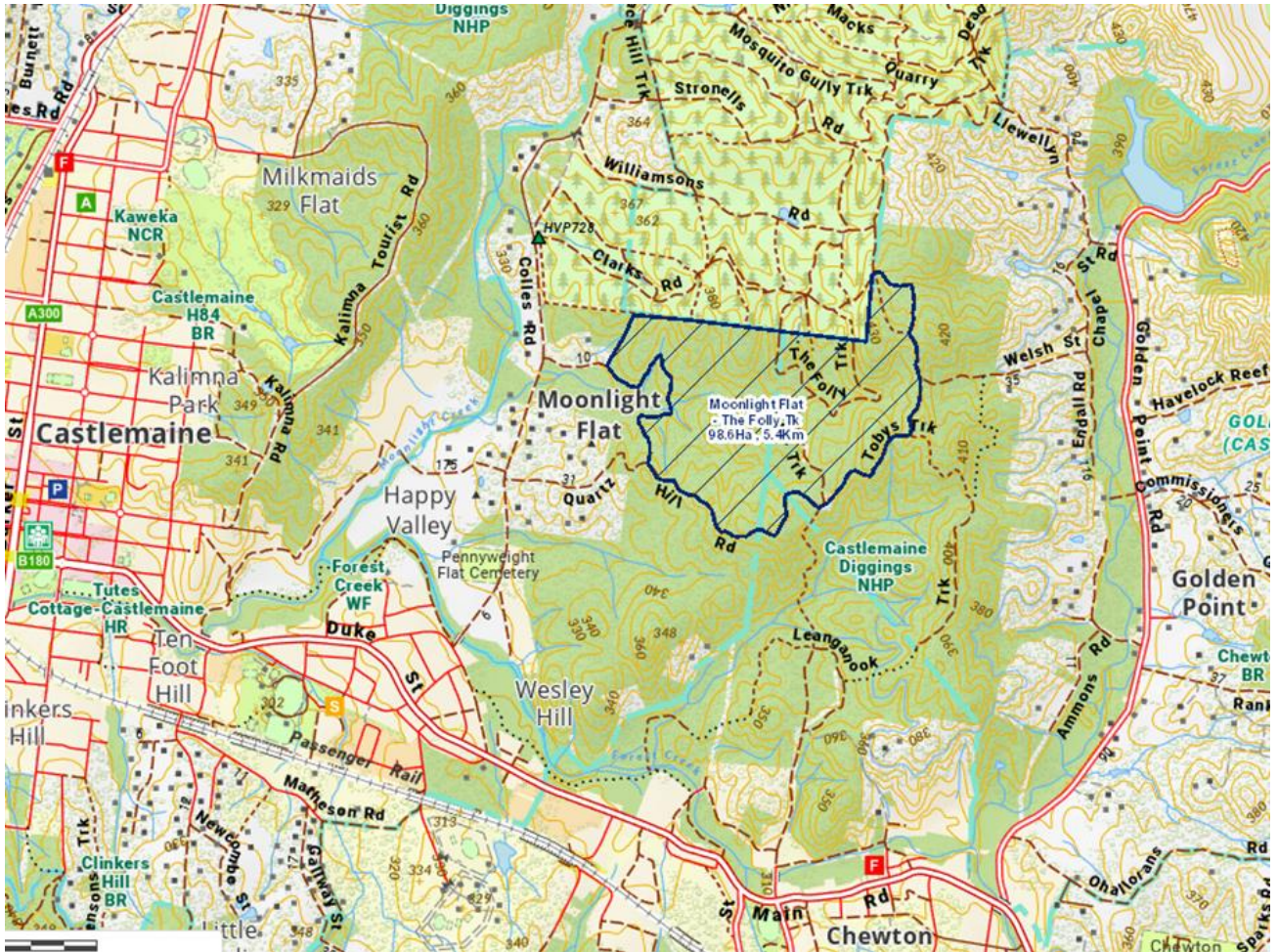
You may see or smell smoke from this burn. sometimes smoke may linger for a few days or more, particularly if there is more than one planned burn in the district.

If you, or someone you care for, experience any symptoms that may be due to smoke exposure, the Department of Health advises that you seek medical advice or call Nurse on Call on 1300 606 024.

Thank you for your patience and understanding while we do this important work to better protect communities, property and the environment from the threat of bushfire.

# Moonlight Flat - The Folly Tk Burn

**Scheduled Date of Ignition: From Sunday 11<sup>th</sup> of May 2025, dependant on weather and forest conditions.**



**Burn name:** LM-MGF-CAS-0888\_Moonlight Flat-The Folly Tk

**Size:** 98.63 ha

**Location:** 0.5 km E of Moonlight Flat

## Find Out More

- Sign up to the free **Planned Burning Victoria** (PBV) system and receive notifications of burns via email or SMS.
  1. Go to <https://plannedburns.ffm.vic.gov.au/>
  2. Type in and select the town/city you want to be notified about or click on “search my current location”
  3. Click “subscribe to area” this will cover all burns within 20 km to 50 km
- View the Joint Fuel Management Plan (JFMP) or upcoming burns near you: [www.ffm.vic.gov.au/plannedburn](http://www.ffm.vic.gov.au/plannedburn)
- Download the **VicEmergency app** or call the **VicEmergency Hotline** on **1800 226 226**
- Visit [www.safertogether.vic.gov.au](http://www.safertogether.vic.gov.au) to learn about Victoria’s Bushfire Management Policy “Safer Together”
- Email: [murraygoldfields.engagement@deeca.vic.gov.au](mailto:murraygoldfields.engagement@deeca.vic.gov.au) or call the Department of Energy, Environment and Climate Action’s Customer Service on **136 186**
- For more information about Traditional Owner burns go to: <https://www.ffm.vic.gov.au/bushfire-fuel-and-risk-management/traditional-owner-burns>