

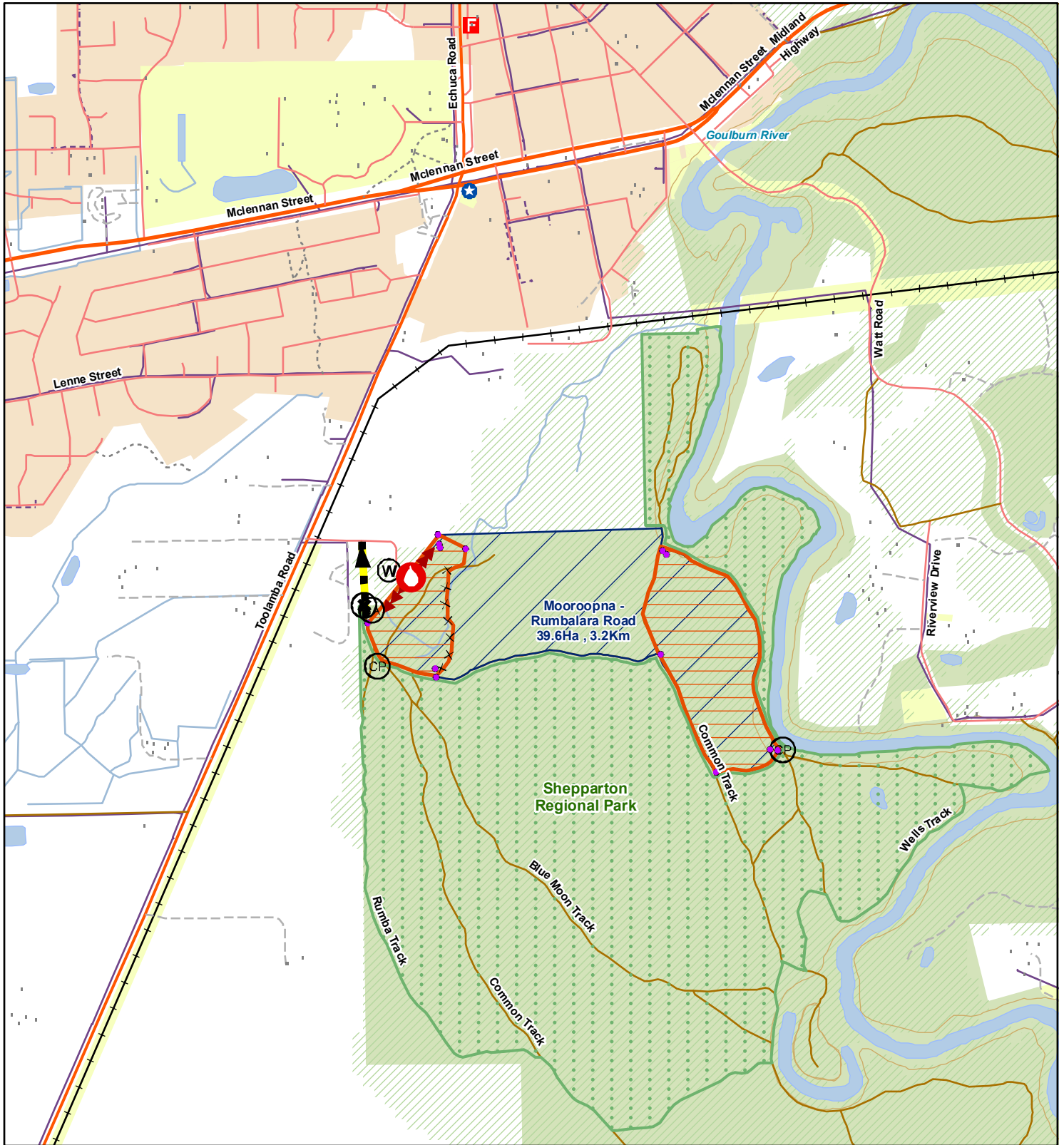
Mooroopna - Rumbalara Road (HR-GBN-SHP-0034)

A4 Burn Operations Map

Indicative Year: 2027



FOREST FIRE MANAGEMENT VICTORIA



<ul style="list-style-type: none"> High Voltage Power Cable High Voltage Power Line Electricity Transmission Network Local Features/ Buildings Air Strip Asset Asset - Defendable Asset - Not Defendable Asset - Potentially Defendable Helipad 	<ul style="list-style-type: none"> Historic Site Indigenous Site Retardant Air Significant Fauna Significant Flora Tower WP - Helicopter WP - Vehicle Wash Down Point Water Point Base Camp 	<ul style="list-style-type: none"> Burn Point of Interest Operations Point Proposed Ignition Point Refuge / Assembly Road Closure Sector Extremity (East-West) Smoke over Road Sign Staging Area - Marshalling Point Contingency Identifier Boundary Weak Point 	<ul style="list-style-type: none"> Perimeter Control Line Internal Access Escape Route Fall Back Line Lighting Pattern - Lighting Pattern - Hand One Way Traffic General Line Sector Line Division Line Contours Burn Exclusion Zone 	<ul style="list-style-type: none"> General Polygon Hazardous Machinery Exclusion Zone Personnel Exclusion Zone Steep Slope Target Fuel Treatments Parks and Reserves State Forest/ Other Public Land Treated Area Treated Area Mechanical Works Public Land Management Overlays 	<ul style="list-style-type: none"> Domestic Firewood and Minor Forest Produce Invasive Pests, Weeds and Pathogens Other Forest Operations Recreation Roading Silviculture and Reforestation 	<ul style="list-style-type: none"> Plantations Hardwood Softwood Unknown Tree Cover
---	--	---	--	---	---	--

Disclaimer: This map is a snapshot generated from Victorian Government data. This material may be of assistance to you but the State of Victoria does not guarantee that the publication is without flaw of any kind or is wholly appropriate for your particular purposes and therefore disclaims all liability for error, loss or damage which may arise from reliance upon it. All persons accessing this information should make appropriate enquiries to assess the currency of the data.

Produced on: 4/15/2026 12:27:36 PM

0 0.15 0.3 0.6 KM

1:15,000

Coordinate System: GDA 1994 MGA Zone 55

