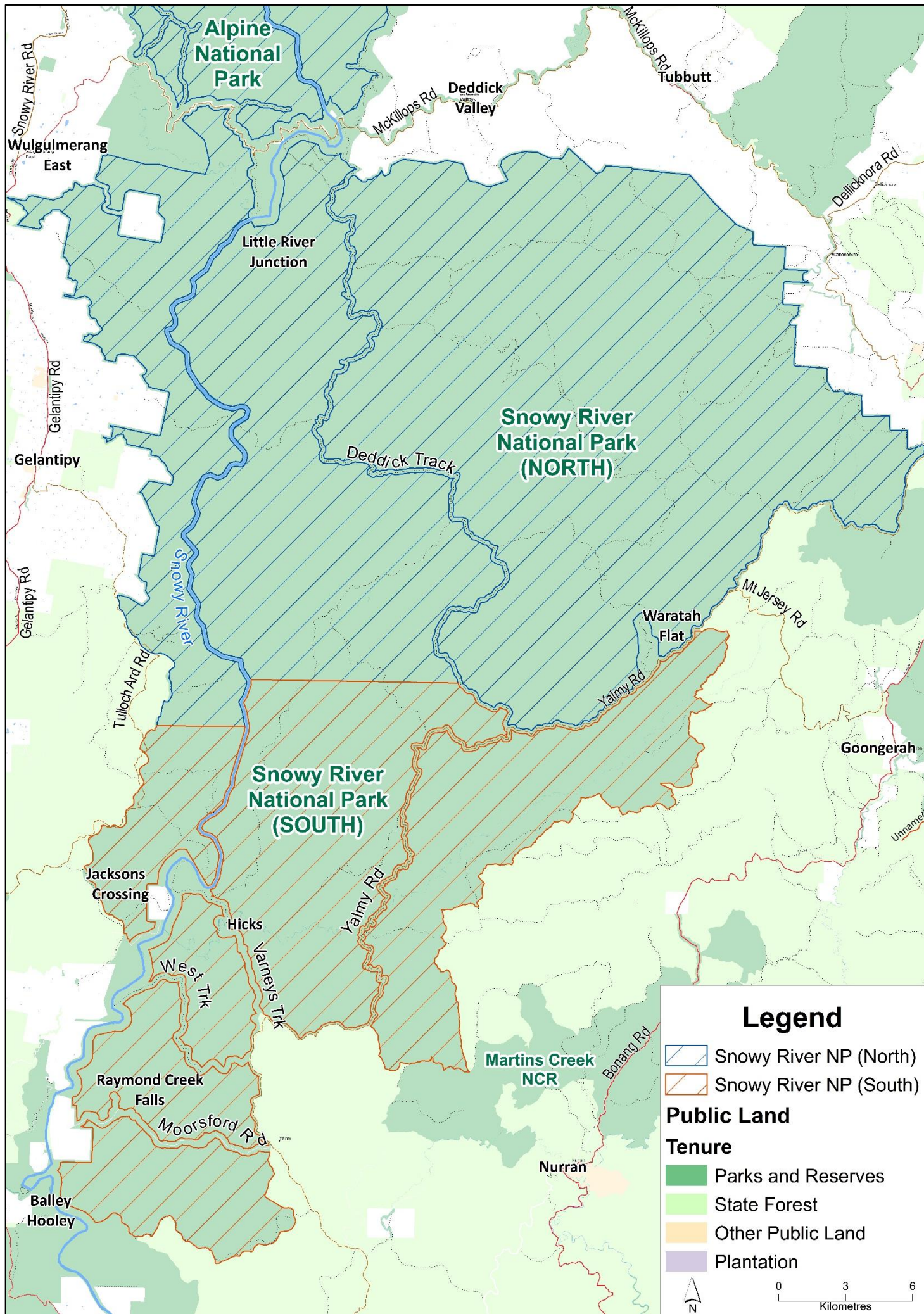


# Information

## Snowy River National Park

### Access restricted (see dates below)

Parts of the Snowy River National Park will be closed for these dates to ensure public safety during aerial shooting operations, targeting deer. For more information visit [www.parks.vic.gov.au](http://www.parks.vic.gov.au)



#### Snowy River NP

**NORTH** closed:

**11-15 November 2024**

**10-14 February 2025**

#### Snowy River NP

**SOUTH** closed:

**16-20 September 2024**

**9-13 December 2024**

**2-6 June 2025**

The following visitor sites and vehicle tracks will remain **OPEN**:

- Snowy River
- Raymond Creek Falls
- Deddick Trk, Yalmy Rd, Varneys Trk, West Trk & Moorsford Rd
- Camping areas:
  - McKillops Bridge
  - Little River Junction
  - Waratah Flat
  - Jacksons Crossing
  - Hicks
  - Balley Hooley

Aerial operations will not be conducted within a 100m minimum buffer of visitor sites, tracks or any private property or public road adjacent to the aerial shooting area.