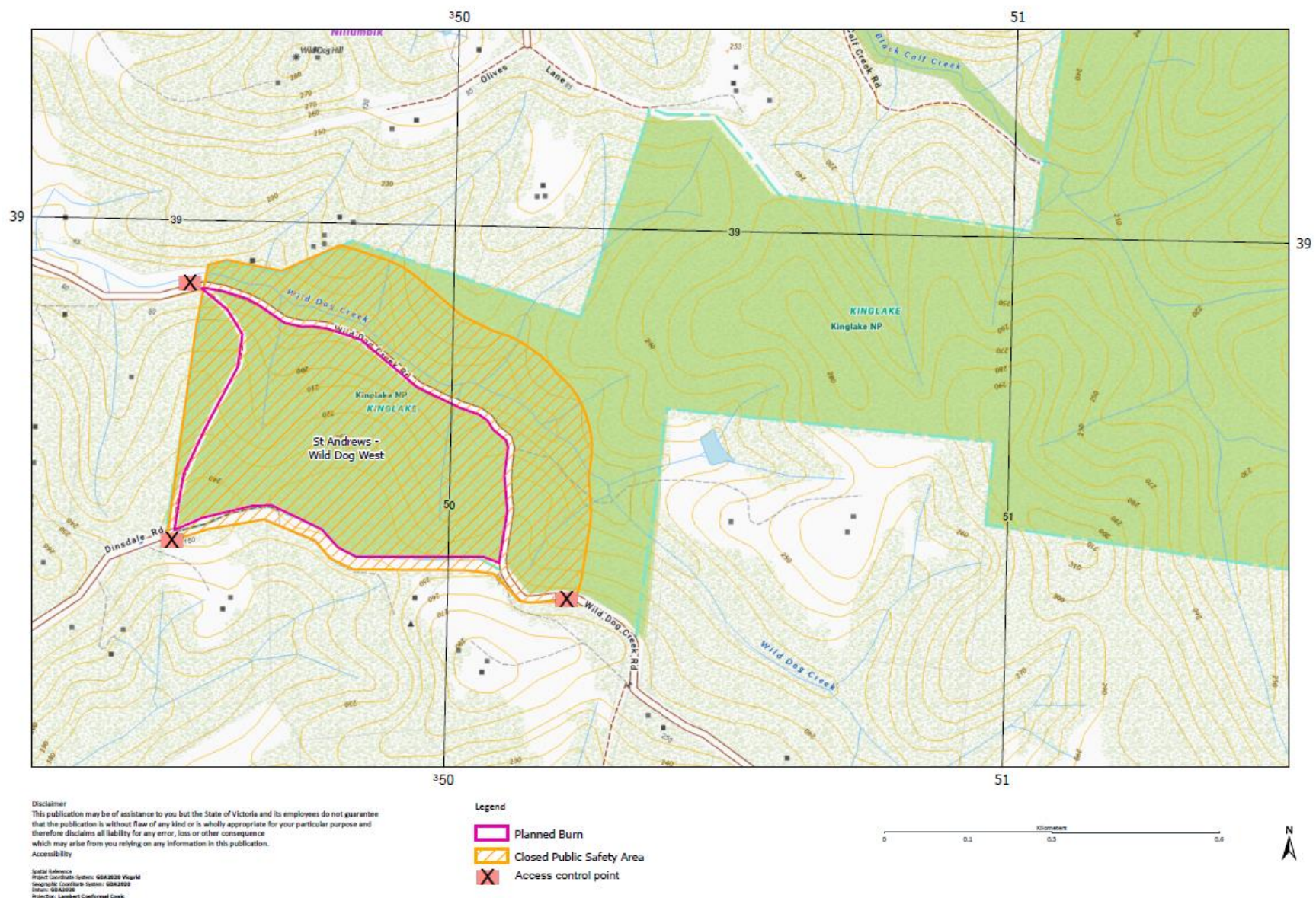


# REGULATIONS

## Access prohibited

This area of the park is closed to enable a planned burn to be carried out safely



In accordance with regulation 20(1)(b) of the *National Park Regulations 2024*, public access to this area and vehicles entering this area is restricted for the purpose of public safety.

For more information on planned burns visit  
[www.ffm.vic.gov.au/plannedburn](http://www.ffm.vic.gov.au/plannedburn)

For information on changes to conditions and park closures visit  
[www.parks.vic.gov.au](http://www.parks.vic.gov.au)