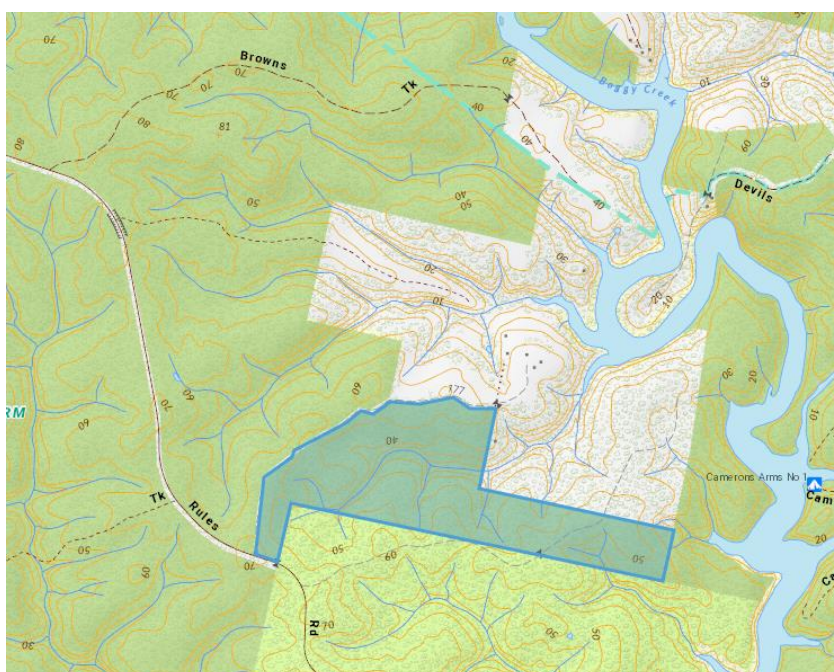


OFFICIAL REGULATIONS

Access prohibited

This area of the park is closed to enable a planned burn to be carried out safely.



In accordance with Regulations 20(1) and 93(1) of the *National Park Regulations 2013*, public access to this area and vehicles entering this area is prohibited for the purpose of public safety.

For more information on planned burns visit
www.ffm.vic.gov.au/plannedburn

For information on changes to conditions and park closures visit
www.parks.vic.gov.au