

Reducing bushfire risk

Kinglake National Park

2022-2023 planned activities

We work year-round to reduce the risk of bushfires in Kinglake National Park. 2022-2023 bushfire risk reduction activities include planned burning, hazardous tree treatment, fuel break creation and maintenance, grass slashing and mulching.

Bushfires are a natural part of the Australian landscape and cannot be eliminated. However, effective planning and preparation can reduce their negative impacts.

One of the main ways to reduce bushfire risk is to reduce the amount of fuels – fuels are grass, leaf litter, twigs, bark and other vegetation that can burn during a bushfire. We also use fuel breaks to reduce bushfire risk.

Planned burning

Planned burning involves lighting controlled fires under mild weather conditions to reduce fuels. The frequency and intensity of these risk reduction activities is determined by Fire Management Zones – areas of public land that our modelling and experience tells us are the most effective for reducing risk.

The following burns will be carried out in Autumn 2023 if conditions are suitable:

- 4 fuel reduction burns
 - 414 hectare (ha) at **Andrews Hill**
 - 475 ha near **Joey Creek in Kinglake West**
 - 256 ha at **Mt Everard East near St Andrews**

- 49 ha at **Goodenia Track** near **Pheasant Creek**

- 2 Traditional Owner burns with the Wurundjeri Woi Wurrung Cultural Heritage Aboriginal Corporation are also planned to be carried out in St Andrews if conditions are suitable, near **Buttermans Track** (331 ha) and **Wild Dog Creek** (6 ha).

Sign up for notifications about planned burns about to happen near you at 'Planned Burns Victoria' www.vic.gov.au/plannedburns.

Or call the VicEmergency Hotline on freecall 1800 226 226 or download the Vic Emergency app to see the location of ignited burns.



Wallaby Trail fuel break

Fuel breaks and mechanical fuel reduction

Fuel breaks create a break in vegetation in the landscape. A fuel break alone won't stop a fire but can be very helpful to firefighters by providing access for vehicles and machinery to respond if a fire occurs. Controlled fires called backburns can also be lit between a fuel break and an approaching bushfire to remove fuel and stop the fire or reduce its intensity. Fuel breaks tend to be 6–20 m wide.

Reducing bushfire risk

Kinglake National Park 2022-2023

Fuel breaks are sometimes referred to as Strategic Fuel Breaks if they are identified as part of a long-term regional bushfire management strategy. Strategic fuel breaks tend to be wider (20–40 m).

In 2022-2023 we will carry out the following activities to reduce bushfire risk in and around Kinglake National Park:

- **Mechanical fuel reduction:**
 - Maintenance and grass slashing of over 10 kms of fuel breaks and tracks to reduce fuel loads and allow fire and management vehicle access
 - 28 ha of vegetation mulching along the Bowden Spur Transmission Lines to reduce fuels.
- **Fuelbreak improvement** along Wallaby Trail and Running Creek Track, Road 47 and Road 1 near Kinglake West. This involves stump grinding, hazardous tree treatment and mulching.
 - 3.5km along Healesville-Kinglake Road in Castella. This will include vegetation mulching and tree treatment.
- **New fire access road:**
 - A new fire access road will be created from **Watsons Creek Track** to **Buttermans Track** in St Andrews to improve emergency access and support planned burning activities. This will include installing 2 culverts and a rock ford as well as some vegetation mulching and hazardous tree treatment.

Maps of planned activities are included in this flyer. If you have any questions contact the VicEmergency Hotline 1800 226 226.

For information on the location of bushfire risk reduction activities, visit www.ffm.vic.gov.au/jfmp.

Values management

Cultural and environmental assessments are carried out for all works to ensure any potential

impacts from operations are mitigated or reduced.

Databases such as the Victorian Biodiversity Atlas and the Aboriginal Cultural Heritage Register and Information System (ACHRIS) are used alongside knowledge from local staff and on-site observations.



Fire affected area in Kinglake National Park

What you can do to help

For your safety, you need to understand your risk and plan ahead. Know what to do on hot, dry, windy days and plan for all situations.

Anyone entering parks and forests during the bushfire season needs to stay aware of forecast weather conditions. Check the Fire Danger Rating and for days of Total Fire Ban at www.emergency.vic.gov.au, on the VicEmergency smartphone app or call the VicEmergency Hotline on 1800 226 226. No fires may be lit on Total Fire Ban days.

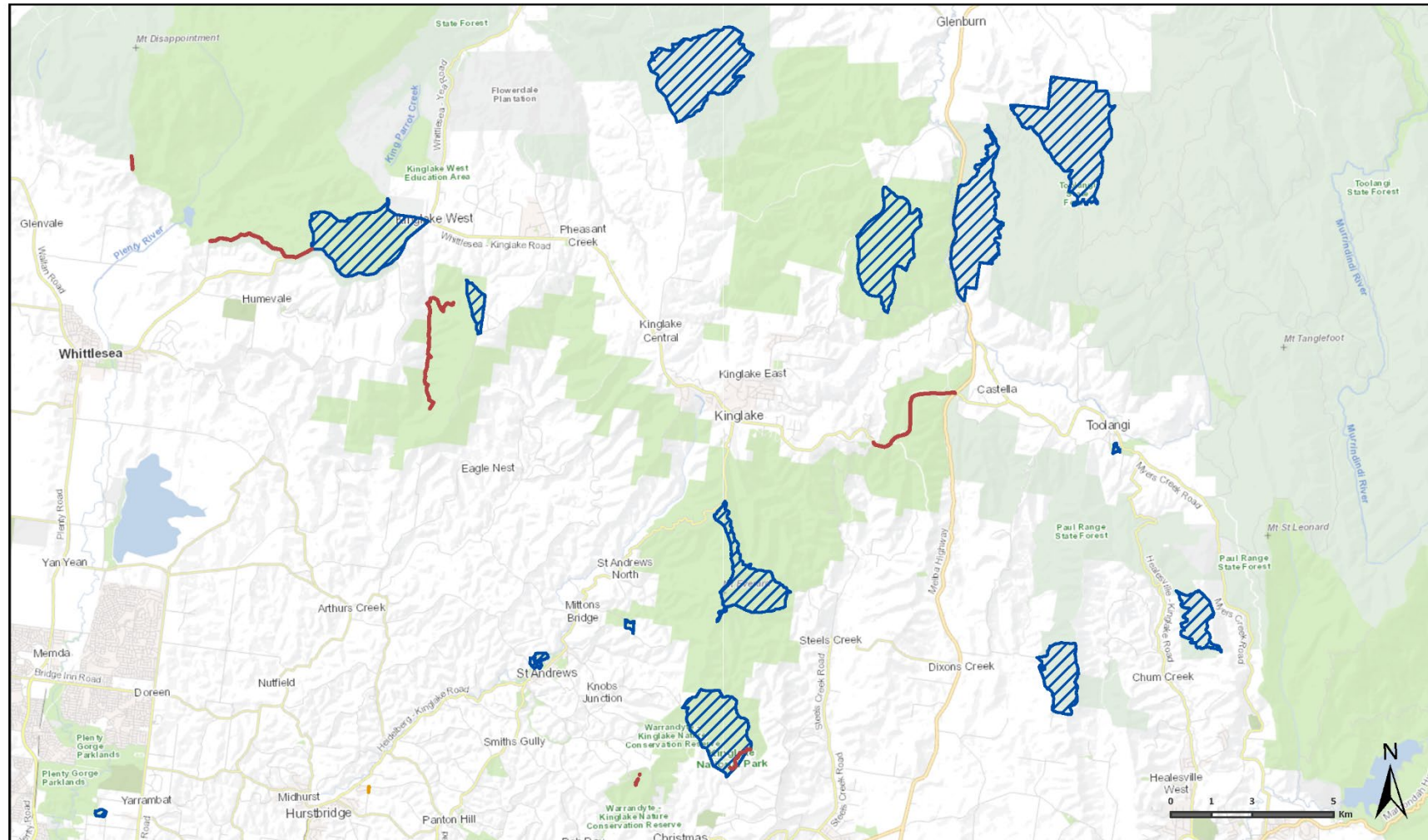
On Catastrophic Fire Danger Rating days Kinglake National Park will be closed for public safety. Warnings signs may be erected, but do not expect a personal warning.

Check the latest conditions at www.parks.vic.gov.au or by calling 13 1963.

For more information about preparing your home and staying safe, please visit: www.cfa.vic.gov.au/planprepare.

Reducing bushfire risk

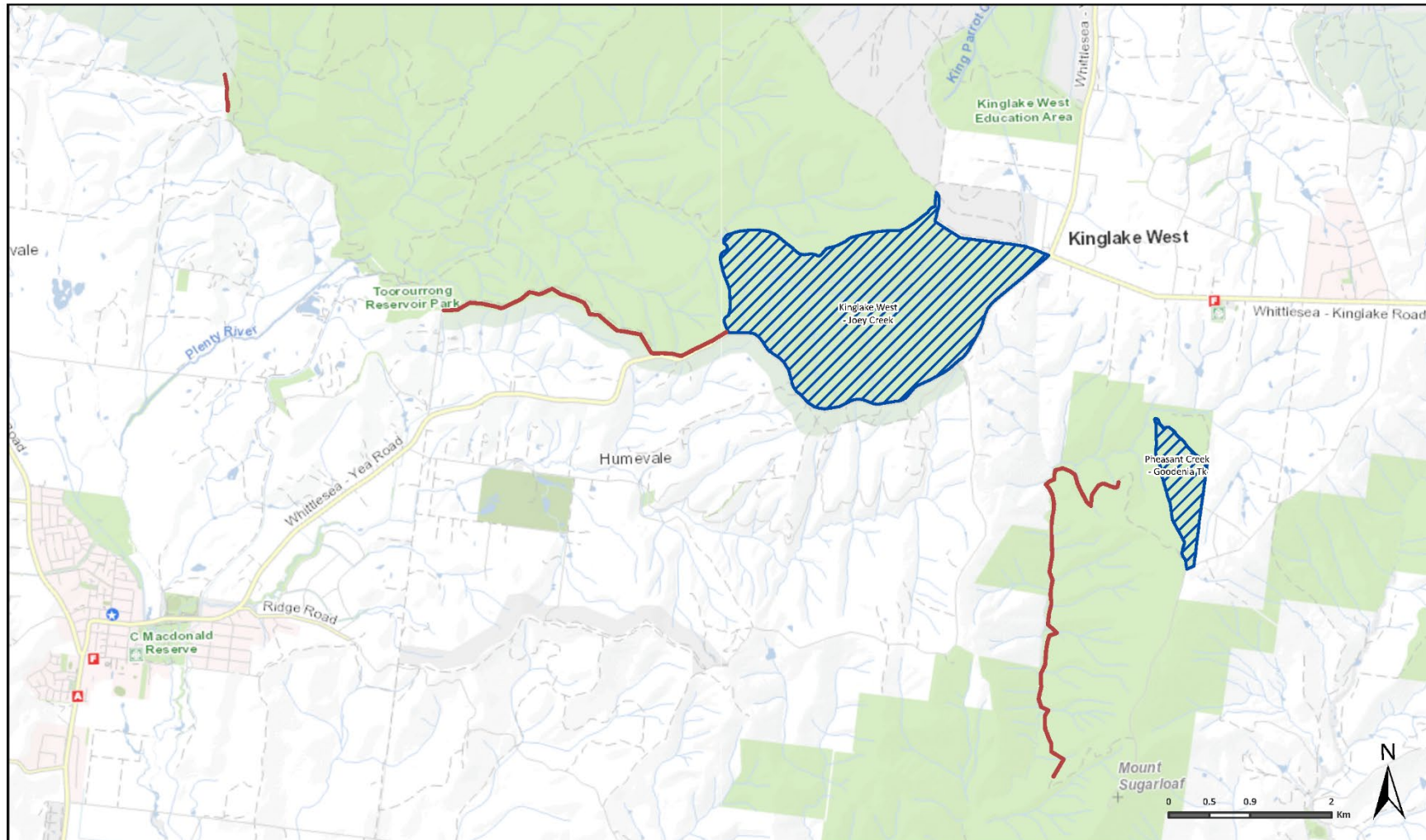
Kinglake National Park 2022-2023



-  Planned Burn (FFMvic)
-  Fuel Break and Roading Improvements
-  Planned Burn and/or Mechanical Fuel Treatment (CFA)

Reducing bushfire risk

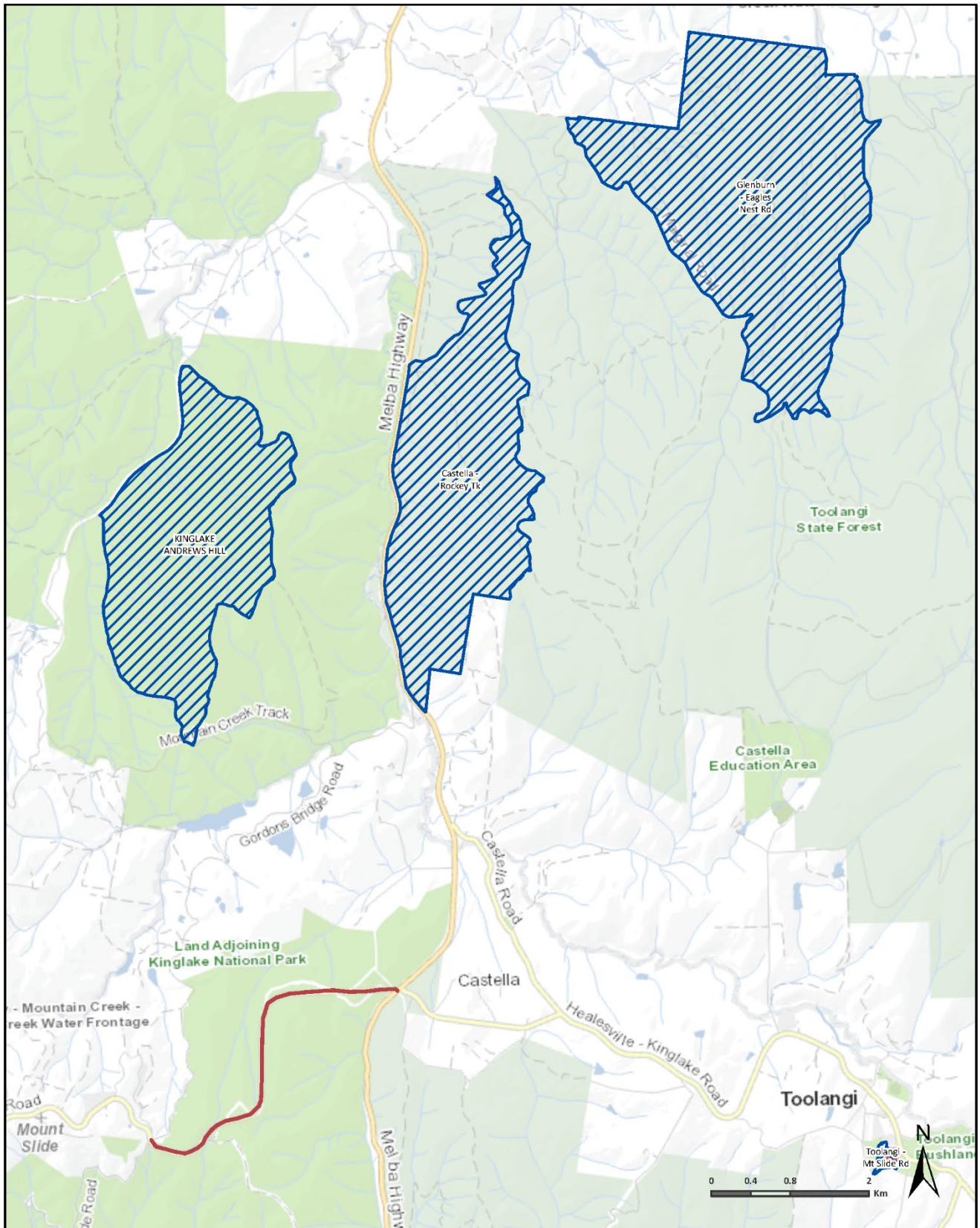
Kinglake National Park 2022-2023




 Fuel Break and Roading Improvements

Reducing bushfire risk

Kinglake National Park 2022-2023

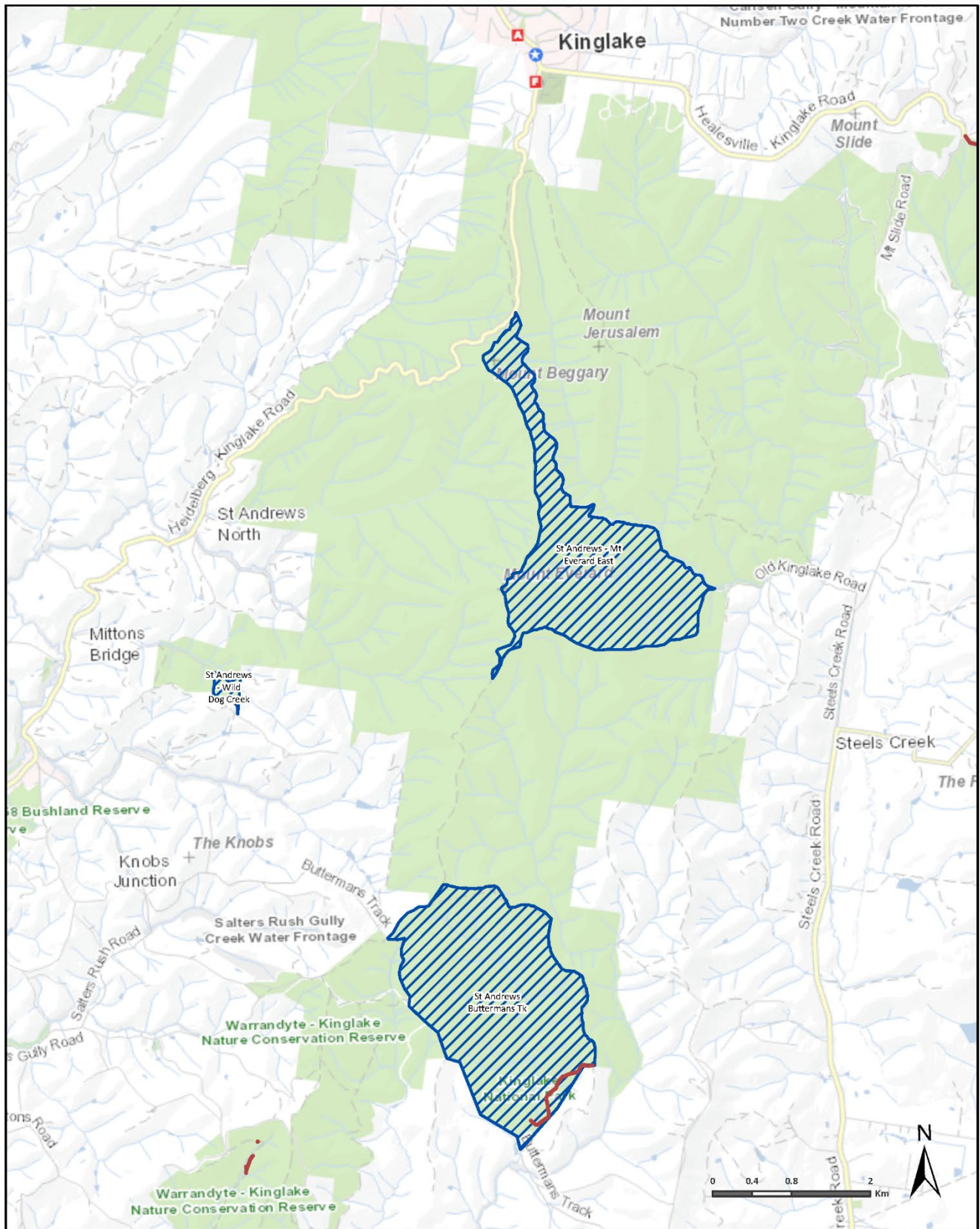


 Planned Burn (FFMVIC)

 Fuel Break and Roading Improvements

Reducing bushfire risk

Kinglake National Park 2022-2023



 Planned Burn (FFMVIC)

 Fuel Break and Roading Improvements