

Black Range State Park

Visitor Guide



Black Range State Park is an ancient and rich landscape. The mountain range, known to Aboriginal people as Burrunj, protects significant cultural sites, including rock shelters, rock art, quarries and scarred trees. Popular activities in this secluded park include bushwalking, picnicking and enjoying nature.



Getting there

The park is situated in Western Victoria 326km north-west of Melbourne and 460km south-east of Adelaide. It is best accessed from the Henty Highway on Rocklands Cherrypool Road.

Please note seasonal closures apply to Muirfoot Track from June to November.

Things to see and do

Walking



Mudadgadjiin Shelter – 400m, 20 minutes return

Starting from Mudadgadjiin Picnic Area, a short walk takes you to a significant Aboriginal art site. Return via the same route.



Rock Escarpment Discovery – 5km, 1.5 hours return

From the Mudadgadjiin picnic area follow the track to the shelter. Continue past the shelter, across a narrow boardwalk and climb steeply to the top of a rocky escarpment. Signage and track markers are limited. Return via the same route.

Experienced and well-prepared walkers can continue south along the range to Muirfoot Track, which is Grade 5 with no signs or track markers.



Mount Byron – 3km, 2 hours return

Starting on the southern side of Muirfoot Track (4WD) follow the steep walking track to the summit of Mount Byron. Signage and track markers are limited. Return via the same route.

Picnicking

Enjoy a picnic surrounded by open forest at Mudadgadjiin Picnic Area. Facilities include picnic tables, fireplaces and a pit toilet.

Drinking water is not available.

Camping

There are no campgrounds in the park, however the state forest surrounding Rocklands Reservoir offers several great campgrounds. For further information visit www.ffm.vic.gov.au/visiting-state-forests/places-to-visit. Minimal impact bush camping is permitted outside the conservation zone. No campfires - fuel stoves only. Camping not permitted in rock overhangs.

Rock climbing

Rock climbing is a popular activity in the park. Please take a minimal impact approach to climbing by staying on designated walking tracks, avoiding damage to vegetation and limiting use of chalk. Significant Aboriginal rock art exists in the park, be mindful of where you climb and report any new discoveries to Parks Victoria. The installation of new bolts or fixed protection is prohibited.

Parks Victoria

Phone 13 1963
www.parks.vic.gov.au

Exploring the history

Traditional occupation centred on natural resources such as water, plant and animal foods and rock outcrops for shelter, artwork and stone tool manufacturing.

In recent times, squatters selected runs on the surrounding fertile plains and ventured into the range to graze stock and harvest timber.

Plants and animals

Burrunj or Black Range provides habitat for a range of native plants. Rare species include Mount Byron bush-pea, Large-leaf Ray flower and Grampians Bossiaea and common species include Yellow Box and River Red Gum trees as well as spring flowering Heath, Calatrix, Thryptomene and Teatree.

Over 100 bird species have been recorded here and Red-necked Wallabies and kangaroos are often seen. The Diamond Firetail Finch is one of 17 threatened species surviving here in open woodland.

Caring for the park

- Please take all rubbish with you and leave no trace of your visit – there is no rubbish collection in the park.
- Keep wildlife wild – do not feed the native wildlife.
- Dogs and domestic pets are not permitted in the park.
- Campfires are only permitted in picnic area steel fireplaces.
- Campfires are not permitted while bush camping.
- Generators, chainsaws and firearms are not permitted.
- Drones, filming, school/group programs and events require a permit.

Be prepared and stay safe

Black Range State Park is in the Wimmera fire district. Bushfire safety is a personal responsibility. Anyone entering parks and forests during the bushfire season needs to stay aware of forecast weather conditions. Check the Fire Danger Rating and for days of Total Fire Ban at www.emergency.vic.gov.au, on the VicEmergency smartphone app or call the VicEmergency Hotline on 1800 226 226. No fires may be lit on Total Fire Ban days.

On Code Red Fire Danger Rating days this park will be closed for public safety. Closure signs will be erected but do not expect an official warning. Check the latest conditions at www.parks.vic.gov.au or by calling 13 1963.

For emergency assistance call Triple Zero (000). If there is a green emergency marker sign near you, read the information on the marker to the operator.

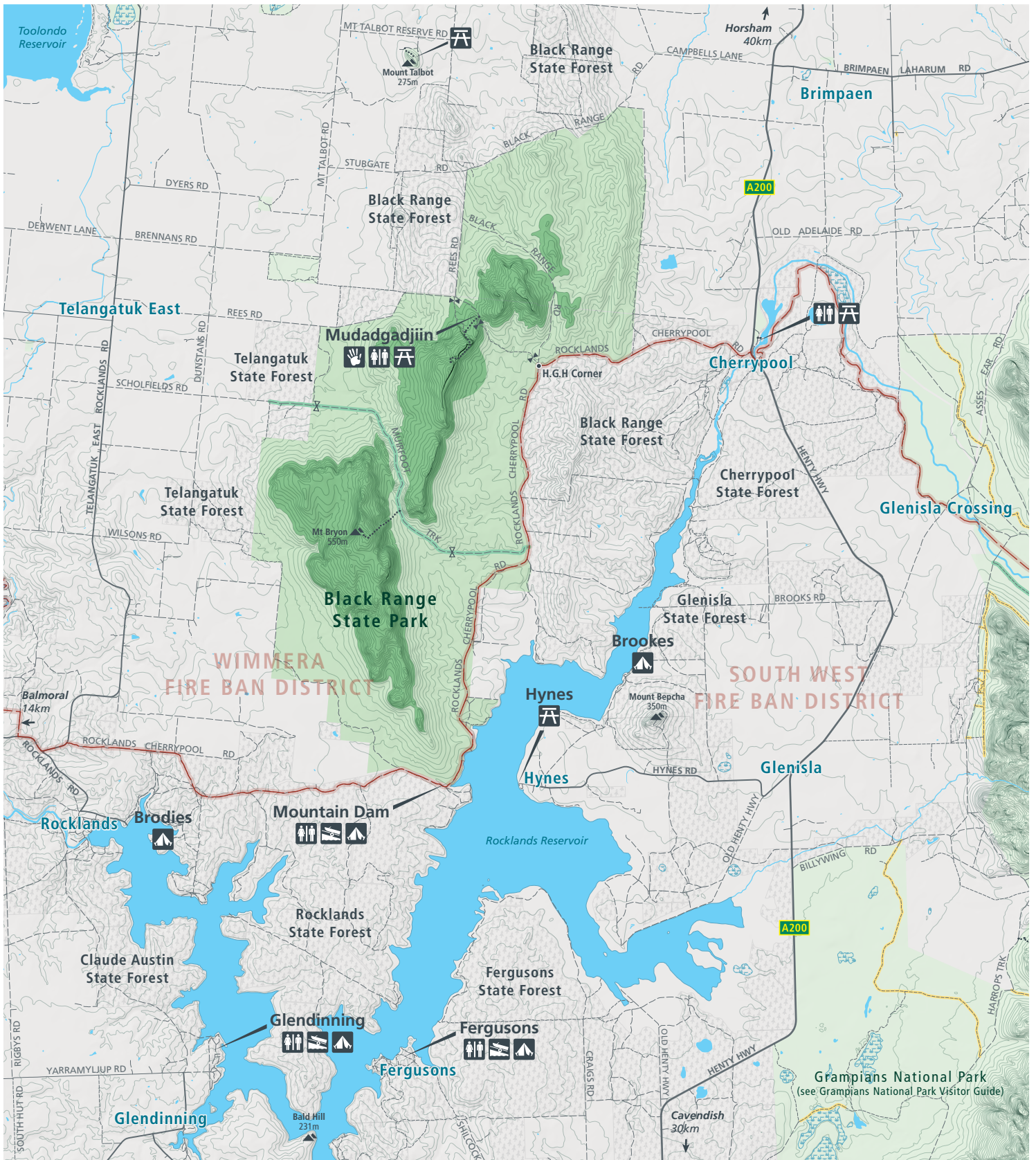
Mobile phone service is limited in the park, however you may get emergency phone coverage at high elevations.



Healthy Parks
Healthy People®



Black Range State Park



- | | | | | |
|-----------------|----------------------------|-----------------|-----------------------------|--|
| Toilets | Gate | Freeway/highway | Walking track | Black Range State Park |
| Picnic area | Gate (seasonal) | Main road | Seasonal closure | Other park/reserve |
| Boat ramp | Fire Ban District boundary | Sealed road | Mgmt. vehicles/walkers only | Conservation Zone – Bush/dispersed camping not permitted |
| Aboriginal site | Unsealed road | 4WD | State forest | Wetland |
| Camping area | | | | |