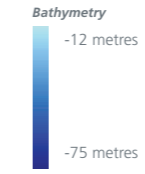


**Discovery Bay Marine National Park Boundary**

The MNP covers 2770 hectares adjacent to Cape Bridgewater along the coast from Blacks Beach to Whites Beach and offshore to three nautical miles, the limit of Victorian waters. Between Whites Beach and Cape Duquesne the park boundary commences 500 m from the coastline. Discovery Bay MNP abuts the Discovery Bay Coastal Park and includes the areas between high and low water mark that were formerly part of the Coastal Park. The park extends 200m beneath the seabed.

- No fishing
- No taking

- Parking
- Information
- Toilets
- Picnic table
- Lookout
- Camping area
- Beach access
- Sealed road
- Unsealed road
- Walking track
- Discovery Bay Coastal Park
- Onshore boundary marker
- Offshore boundary marker (Unmarked in water)



[www.parks.vic.gov.au](http://www.parks.vic.gov.au)

Latitude and Longitude values are based on WGS84. GPS users must note that coordinates for boundaries are given in the format degrees : minutes : decimal minutes. Alternate formats are available on Parkweb, by calling 13 1963, or from Parks Victoria offices.

Disclaimer: Parks Victoria does not guarantee that this data is without flaw of any kind and therefore disclaims all liability which may arise from you relying on this information.

Data source acknowledgements: State Digital Mapbase. The State of Victoria and Department of Sustainability and Environment.

Cartography by Parks Victoria **January 2014**  
For mobile App search for Avenza PDF Maps