

Centurion Walls

Rock Climbing Information Guide



May 2026

Background

Cultural values have been rediscovered in the Mt Difficult Range of the Northern Grampians (Gariwerd) National Park, at a designated climbing area known as Centurion Walls.

Parks Victoria, Traditional Owners and Climbing Victoria have worked together to ensure a balanced approach to protecting cultural heritage and continuing climbing access at the site.

The rediscovered values are located within the Lower Centurion area.

They hold deep cultural significance for Aboriginal people and provide a living connection to Country, including stories and knowledge passed down through generations.

Aboriginal cultural heritage is protected by legislation and rediscoveries of this nature are expected, given the richness of the cultural landscape of Gariwerd.

A partial closure of areas north of and including the climbing route *Damage Done* has been agreed, with signage in place to prevent visitors from unintentionally causing harm.

With the partial closure now in place, Parks Victoria thanks climbers and visitors to Gariwerd for their respect and ongoing stewardship of this ancient landscape.

These decisions reflect a shared commitment between Parks Victoria, Traditional Owners and Climbing Victoria to work in genuine partnership – listening, engaging meaningfully, and supporting both the protection of cultural heritage and the future of climbing at Gariwerd.

Partial closures at Lower Centurion

A partial closure of climbing routes is now in place within the Lower Centurion area.

Centurion Walls, consisting of Lower Centurion and Upper Centurion Walls, is accessed via Mt Zero Road, approximately 1.2 km south of the Rose Gap Road intersection.

On-ground signage at the access track clearly delineates where climbing is and isn't permitted. It is the responsibility of visitors to know where they can and cannot rock climb.

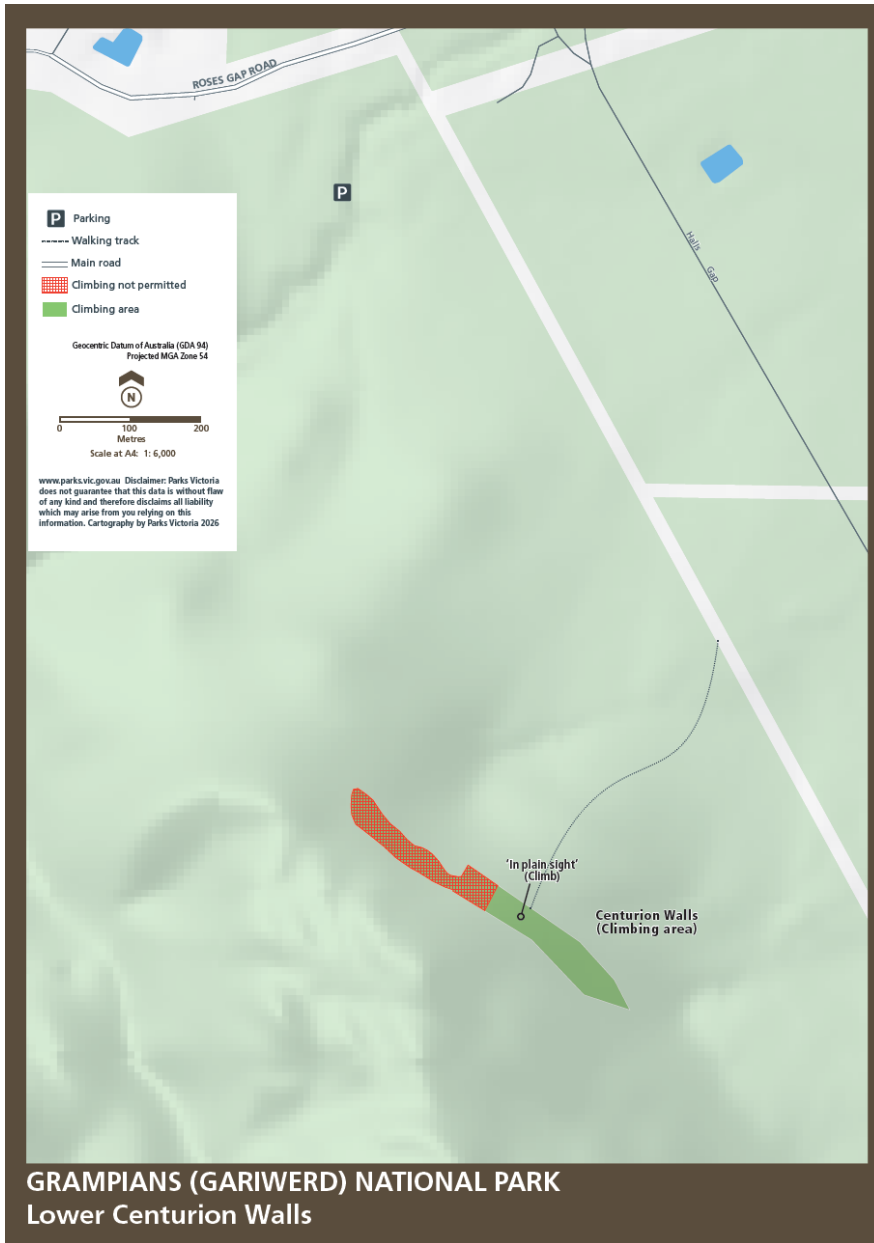
All climbs from the north of and including 'Damage Done' are permanently **closed** to climbing. This includes the following 22 climbs:

Damage Done, Shades of Black, Liberator, Lexicon, Temujin, Killer Wolf, Devilled Haircut, Compressor route, Anti-Christ Superstar, Pining for the Fiords, Unknown Route 2, Genghis Khan, Project KP2, Project KP, Kublai Khan, Stone Temptress, Millars Falls (Project), Psychotic Episode, Trail of the Dead, Flood the Zone, Push it Upstairs, Progressive Happy House.

All climbs to the south of and including 'In Plain Sight' will remain **open** to climbing:

In Plain Sight, Who Dreams of Cats-short, Who Dreams of Cats, Nowhere to Hide, Afterworld, Left Hand Black, Centrifugal Force, Centrifugal Force- Romanes Eunt Domas (linkup), Romanes Eunt Domas, Black Nobility, Sandpit, Ton Steine Scherben, Winged Corpse, HCP, Massacres and Maniacs, Lunchbox Legend, AA New Rope/ New Route.

Climbers must treat the exclusion areas with the utmost respect. Climbing in this area is a privilege, not a right.



Further Information

The Aboriginal Heritage Act 2006 protects Aboriginal cultural heritage, and significant financial penalties apply for harm caused by individuals or corporate bodies.

Approximately 120 Designated Climbing Areas are open for climbing in the Grampians (Gariwerd) National Park, as identified by the Greater Gariwerd Landscape Management Plan.

Parks Victoria is continuing to work with Traditional Owners and Climbing Victoria to review more climbing sites across the landscape.

Parks Victoria asks that climbers in Gariwerd refer to the listing of designated climbing areas and maps, and refer to any onsite signage. Visit the [Rock Climbing in Gariwerd page](#) for further information.

If climbers and other visitors observe or suspect cultural values are present, then they are encouraged to contact their local Area Chief Ranger or Parks Victoria on 13 1963.