



Grampians (Gariwerd) National Park

Rock Climbing - Visitor Guide

Grampians (Gariwerd) National Park is Victoria's fourth-largest national park. It is listed on Australia's National Heritage List for its significant Aboriginal cultural heritage, diverse fauna and flora, landscapes and protection of threatened species. A popular visitor destination for hiking, road touring, cycling, canoeing and birdwatching, the park is also well known for rock climbing.

Climbing in the Gariwerd landscape

Parks Victoria and the Gariwerd Traditional Owners, represented by Barengi Gadjin Land Council Aboriginal Corporation, Eastern Maar Aboriginal Corporation and Gunditj Mirring Traditional Owners Aboriginal Corporation, released the Greater Gariwerd Landscape Management Plan in 2021. Recreation opportunities, including rock climbing, have been identified within the plan.

Designated climbing areas

Following extensive cultural heritage assessments, 122 rock climbing areas were identified in the national park, including 13 bouldering sites. Rock climbing can only occur in these designated areas.

Rock climbing management has changed as part of a review of activities in the park, including extensive assessments to understand cultural and environmental values.

Climbing outside of a designated climbing area can result in regulatory penalties.

Parks Victoria and Traditional Owners continue to review access to rock climbing areas. Visit the Parks Victoria website to see the latest updates on rock climbing areas.

Before you climb

It is your responsibility to plan and prepare before climbing in the Grampians (Gariwerd) National Park.

Current maps for rock climbing are available online and at Brambuk the National Park and Cultural Centre in Halls Gap, where Parks Victoria staff can provide further advice.

Responsible climbing

- Rock climbing and bouldering can only occur in designated areas
- Rock climbers are responsible for assessing and accepting the risks associated when climbing in these areas
- Respect other climbers and park visitors
- Stick to established tracks and avoid damaging or removing vegetation where possible
- Minimise the use of chalk and only use chalk coloured to match the rock surface.

Licensed tour operators

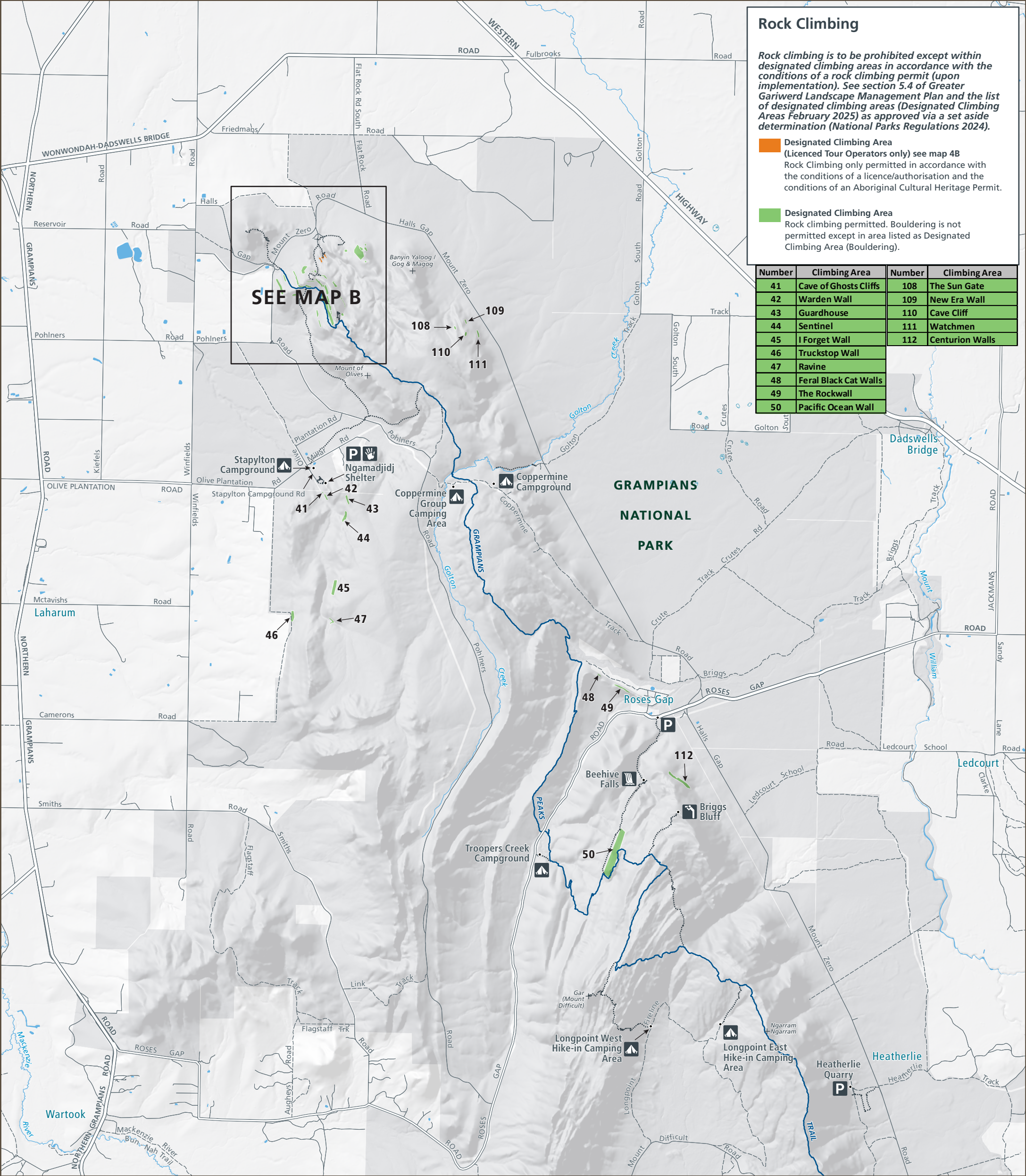
Summerday Valley can be accessed by joining a guided rock climbing activity with a Licensed Tour Operator at designated areas. For more information on Licensed Tour Operators operating in the Gariwerd landscape, visit the Parks Victoria website.

Further information

The summer 2024-25 bushfires impacted large sections of the park, and conditions may have changed since your last visit.

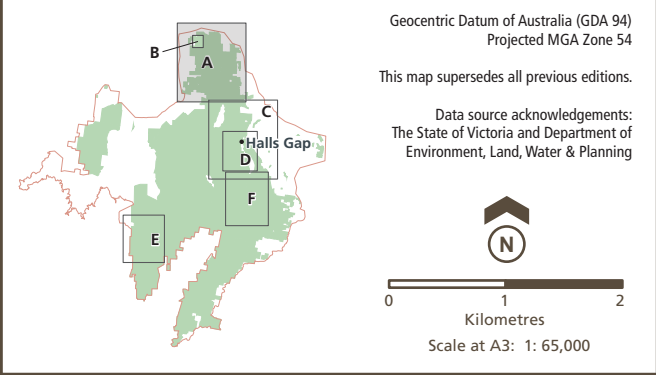


For the latest information on rock climbing in the Gariwerd landscape, scan the QR code, call 13 1963, or visit Brambuk the National Park and Cultural Centre in Halls Gap.

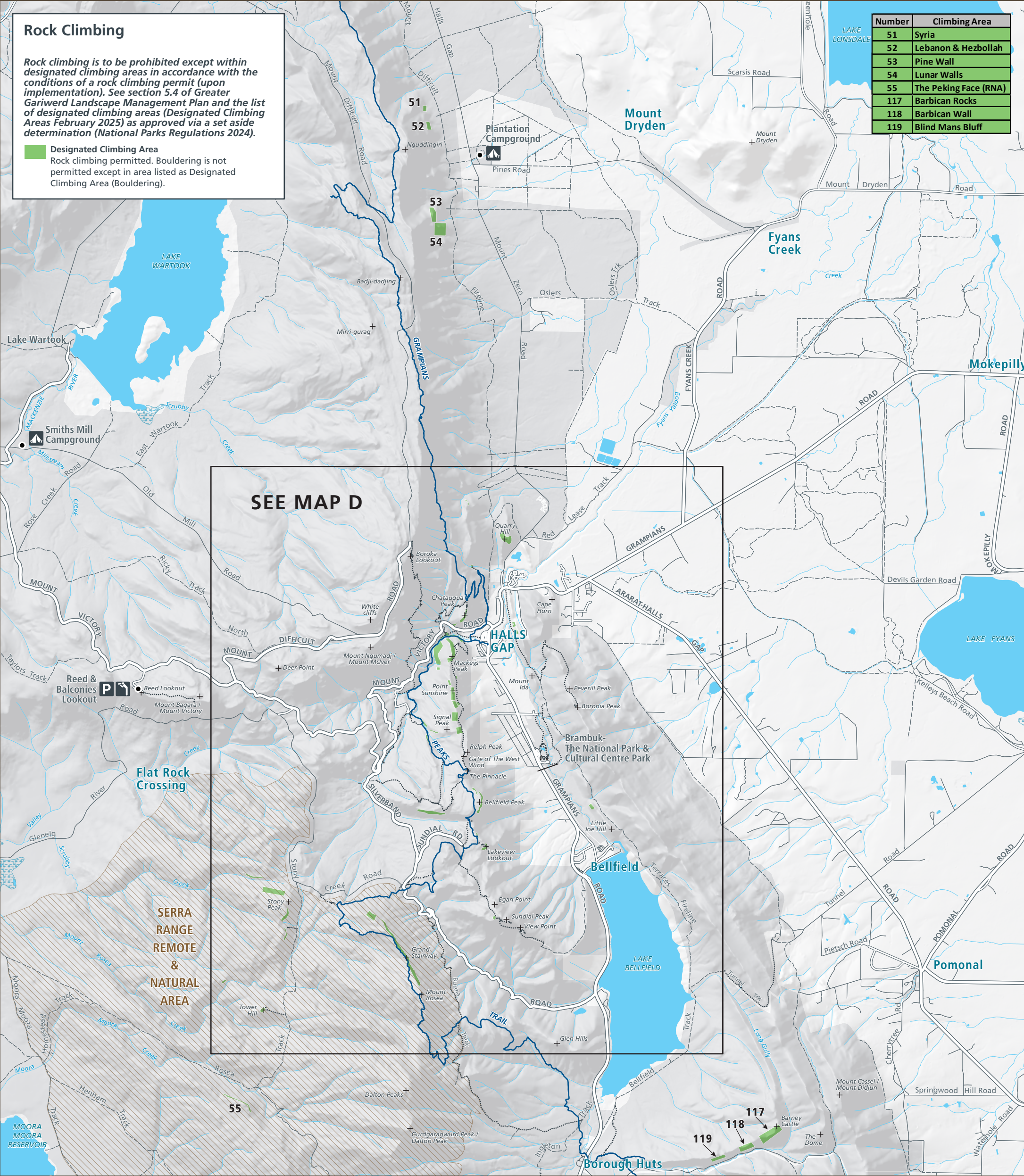


GRAMPIANS (GARIWERD) NATIONAL PARK DESIGNATED CLIMBING AREAS

Map A - Rock Climbing (Gunigalg - Gar)



Planning Area Land Tenure	Visitor Sites (indicative only & subject to change)	Roads & Tracks	Water Features
<div></div> Parks Victoria estates	<div></div> Site location	<div></div> Freeway/highway	<div></div> Waterbody
	<div></div> Camping	<div></div> Main road	<div></div> Wetland
	<div></div> Toilets	<div></div> Sealed road	<div></div> River
	<div></div> Lookout	<div></div> Unsealed road	
	<div></div> Waterfall	<div></div> 4WD	
		<div></div> Walking track	
		<div></div> Grampians Peaks Trail	
	<div></div> Aboriginal site (Public rock art site)		
	<div></div> Information		
	<div></div> Parking		
	<div></div> Picnic area		
	<div></div> Trailhead		

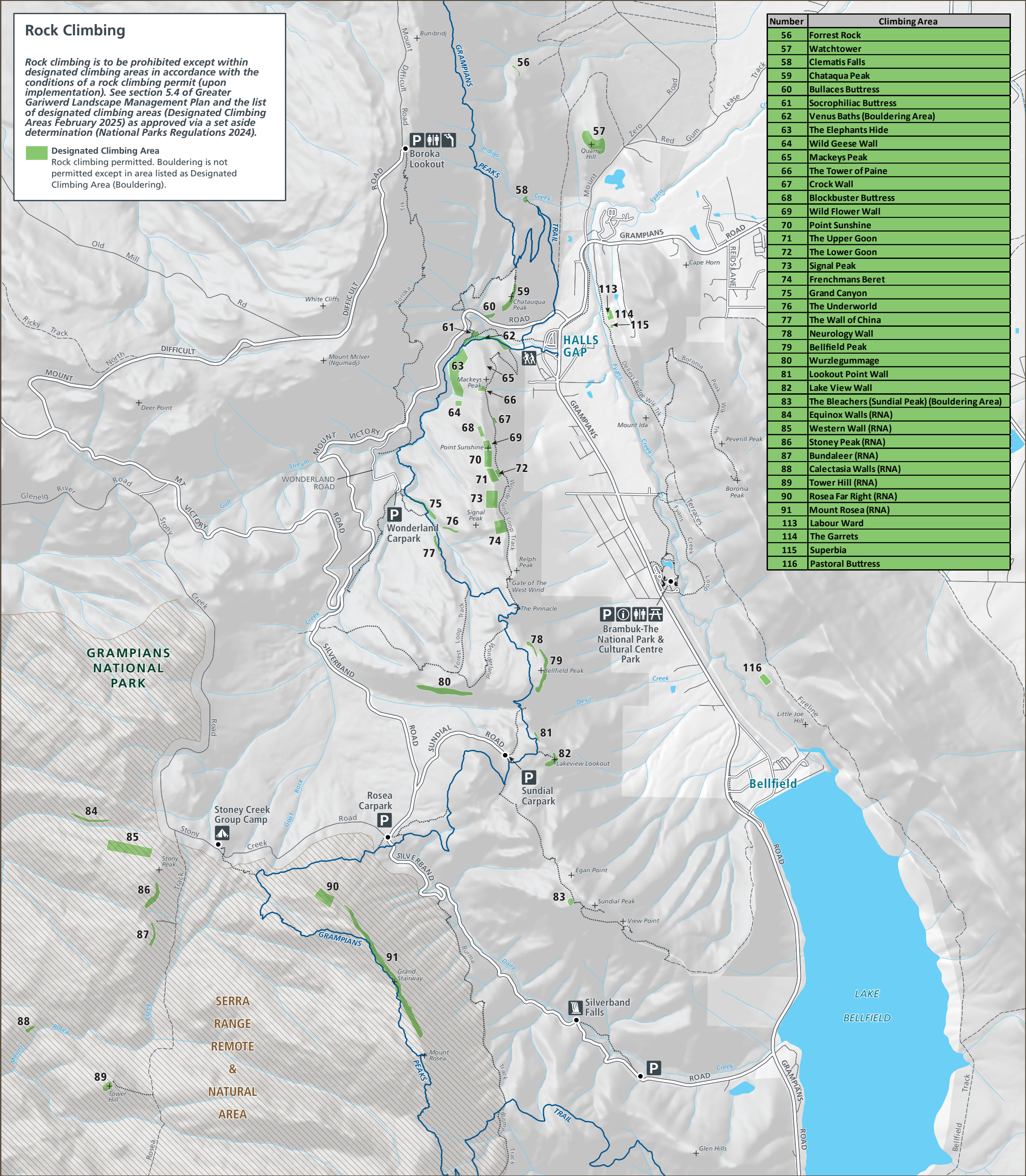


Rock Climbing

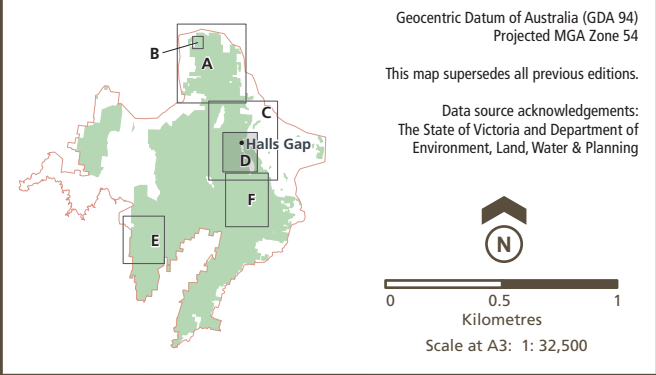
Rock climbing is to be prohibited except within designated climbing areas in accordance with the conditions of a rock climbing permit (upon implementation). See section 5.4 of Greater Gariwerd Landscape Management Plan and the list of designated climbing areas (Designated Climbing Areas February 2025) as approved via a set aside determination (National Parks Regulations 2024).

Designated Climbing Area
Rock climbing permitted. Bouldering is not permitted except in area listed as Designated Climbing Area (Bouldering).

Number	Climbing Area
56	Forrest Rock
57	Watchtower
58	Clematis Falls
59	Chataqua Peak
60	Bullaces Buttress
61	Socrophiliac Buttress
62	Venus Baths (Bouldering Area)
63	The Elephants Hide
64	Wild Geese Wall
65	Mackeys Peak
66	The Tower of Paine
67	Crock Wall
68	Blockbuster Buttress
69	Wild Flower Wall
70	Point Sunshine
71	The Upper Goon
72	The Lower Goon
73	Signal Peak
74	Frenchmans Beret
75	Grand Canyon
76	The Underworld
77	The Wall of China
78	Neurology Wall
79	Bellfield Peak
80	Wurzlegummage
81	Lookout Point Wall
82	Lake View Wall
83	The Bleachers (Sundial Peak) (Bouldering Area)
84	Equinox Walls (RNA)
85	Western Wall (RNA)
86	Stoney Peak (RNA)
87	Bundaleer (RNA)
88	Calectasia Walls (RNA)
89	Tower Hill (RNA)
90	Rosea Far Right (RNA)
91	Mount Rosea (RNA)
113	Labour Ward
114	The Garrets
115	Superbia
116	Pastoral Buttress



GRAMPIANS (GARIWERD) NATIONAL PARK DESIGNATED CLIMBING AREAS
Map D - Rock Climbing (Halls Gap Inset)



Planning Area Land Tenure

Parks Victoria estates

Management Zone Overlay

Remote & Natural Area

Visitor Sites
(indicative only & subject to change)

Site location

Camping

Toilets

Lookout

Waterfall

Information

Parking

Picnic area

Trailhead

Roads & Tracks

Freeway/highway

Main road

Sealed road

Unsealed road

4WD

Walking track

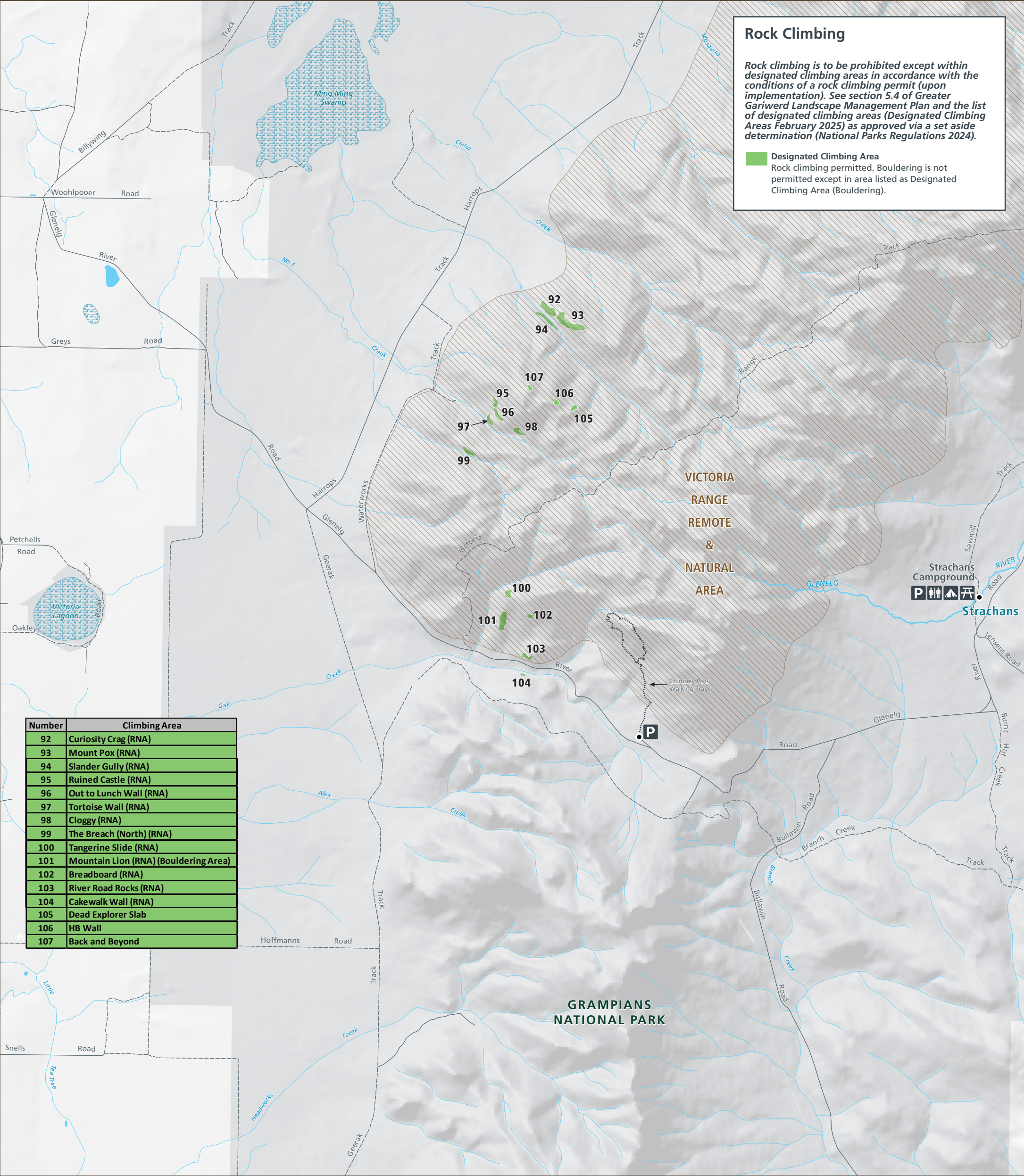
Grampians Peaks Trail

Water Features

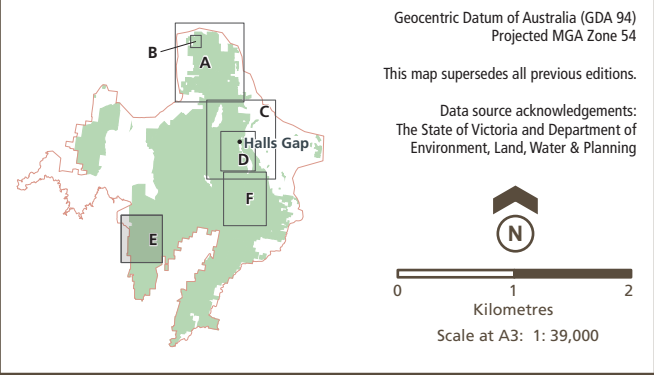
Waterbody

Wetland

River



GRAMPIANS (GARIWERD) NATIONAL PARK DESIGNATED CLIMBING AREAS
Map E - Rock Climbing (Billawin South)



Planning Area Land Tenure

- Parks Victoria estates

Management Zone Overlay

- Remote & Natural Area

Visitor Sites

(indicative only & subject to change)

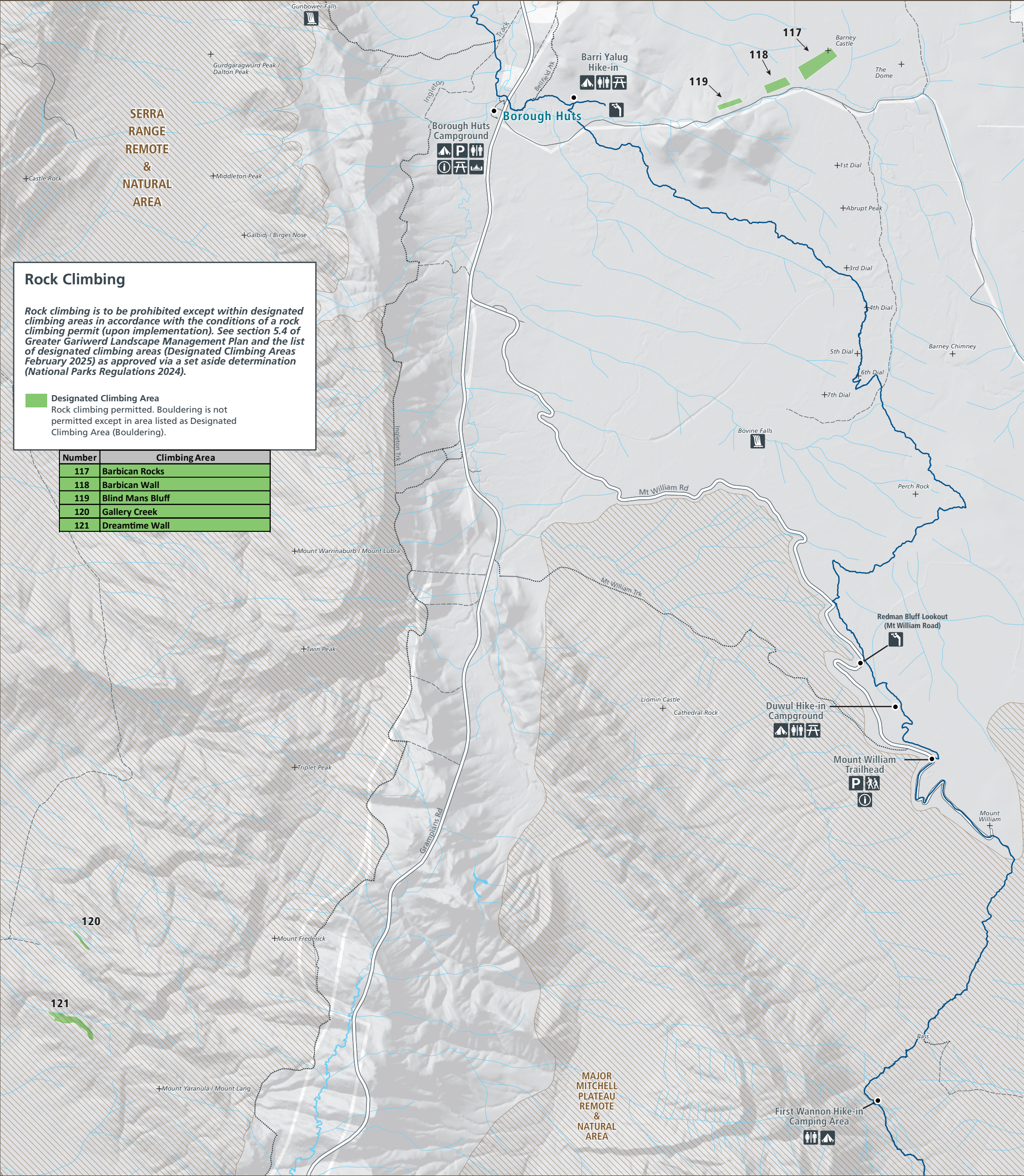
- Site location
- Camping
- Toilets
- Parking
- Picnic area

Roads & Tracks

- Freeway/highway
- Main road
- Sealed road
- Unsealed road
- 4WD
- Walking track
- Grampians Peaks Trail

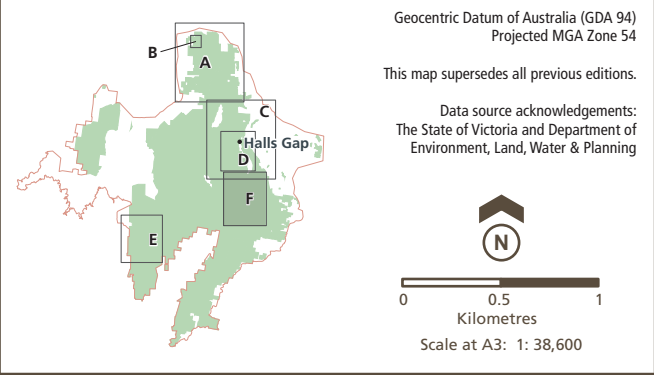
Water Features

- Waterbody
- Wetland
- River



GRAMPIANS (GARIWERD) NATIONAL PARK DESIGNATED CLIMBING AREAS

Map F - Rock Climbing (Mt William (Duwil) /Serra Range)



Planning Area Land Tenure

Parks Victoria estates

Management Zone Overlay

Remote & Natural Area

Visitor Sites

(indicative only & subject to change)

- Site location
- Camping
- Toilets
- Lookout
- Waterfall
- Fireplace
- Information
- Parking
- Picnic area
- Trail head

Roads & Tracks

- Freeway/highway
- Main road
- Sealed road
- Unsealed road
- 4WD
- Walking track
- Grampians Peaks Trail

Water Features

- Waterbody
- Wetland
- River