

Hepburn Regional Park

Storm damage update – Autumn 2023



Hepburn Regional Park is open for visitors, however, due to storm damage Tipperary Springs Day Visitor Area, several walking trails and parts of the Goldfields Track are closed. Parks Victoria and DJAARA are working hard to reopen these areas as soon as possible.

Hepburn Regional Park has experienced significant storm events over the past few years. Damage and debris from multiple events has contributed to a large recovery effort. We acknowledge the cumulative impacts closures have had on the community and visitors over this time.

Please see below how to best plan your visit.

Walking Trails	Status
Golden Spring to Hepburn Mineral Springs Reserve (via Jacksons Lookout)	Open
Hepburn Mineral Springs Reserve to Argyle Spring	Open
Lalgambuk (Mount Franklin) Circuit walk	Open
Goldfields Track – North of Jacksons Lookout and South of Twin Bridges	Open
Mineral Springs Loop Walk, Sailors Falls	Closed
Twin Bridges to Bryces Flat (both sides of Sailors Creek including Goldfields Track)	Closed
The Blowhole to Golden Spring walking track	Closed
The Blowhole walking track loops	Closed

Visitor Areas	Status
Golden Spring Mineral Spring	Open
The Blowhole	Open
Bryces Flat	Open
Twin Bridges	Open
Sailors Falls Picnic Area, Viewing Area and steps base of the falls	Open
Lalgambuk (Mount Franklin) Day Visitor Area and Camping Area	Open
Tipperary Springs Day Visitor Area	Closed

Steps to Re-opening

Parks Victoria and DJAARA are undertaking multiple steps to reopen flood and storm affected parks:

1. Assessments – Local rangers aim to protect visitors from known and foreseeable risks. Site assessments include looking at hazards, infrastructure, landscape and environment impacts, European heritage damage, engineering and insurance. Some assessments will require complex technical experts and advice.
2. Aboriginal cultural heritage protection – This park is jointly managed with DJAARA and is rich with tangible evidence of Aboriginal use and occupancy. A dedicated team has been put in place and is working to ensure recovery efforts cause no further harm to Aboriginal cultural heritage.

3. Recovery and rehabilitation works - once assessments are complete, we will begin recovery, repair and rehabilitation work. Our staff have the tools and expertise to carry out many recovery tasks themselves, however, some tasks can only be undertaken by qualified contractors with specialised machinery.

More than 80 parks were impacted by the 2022 floods and storms, and in many cases the same processes and experts are needed to complete these steps across the state.

While we are busy working on the park recovery, please help by abiding by park closure notices. Parks Victoria will provide an update when changes occur.

Please respect current trail and location closures that are there to support everyone's safety.

For the latest information on Hepburn Regional Park please check the website parks.vic.gov.au or if you wish to report damage to closure signs please contact rangers on info@parks.vic.gov.au



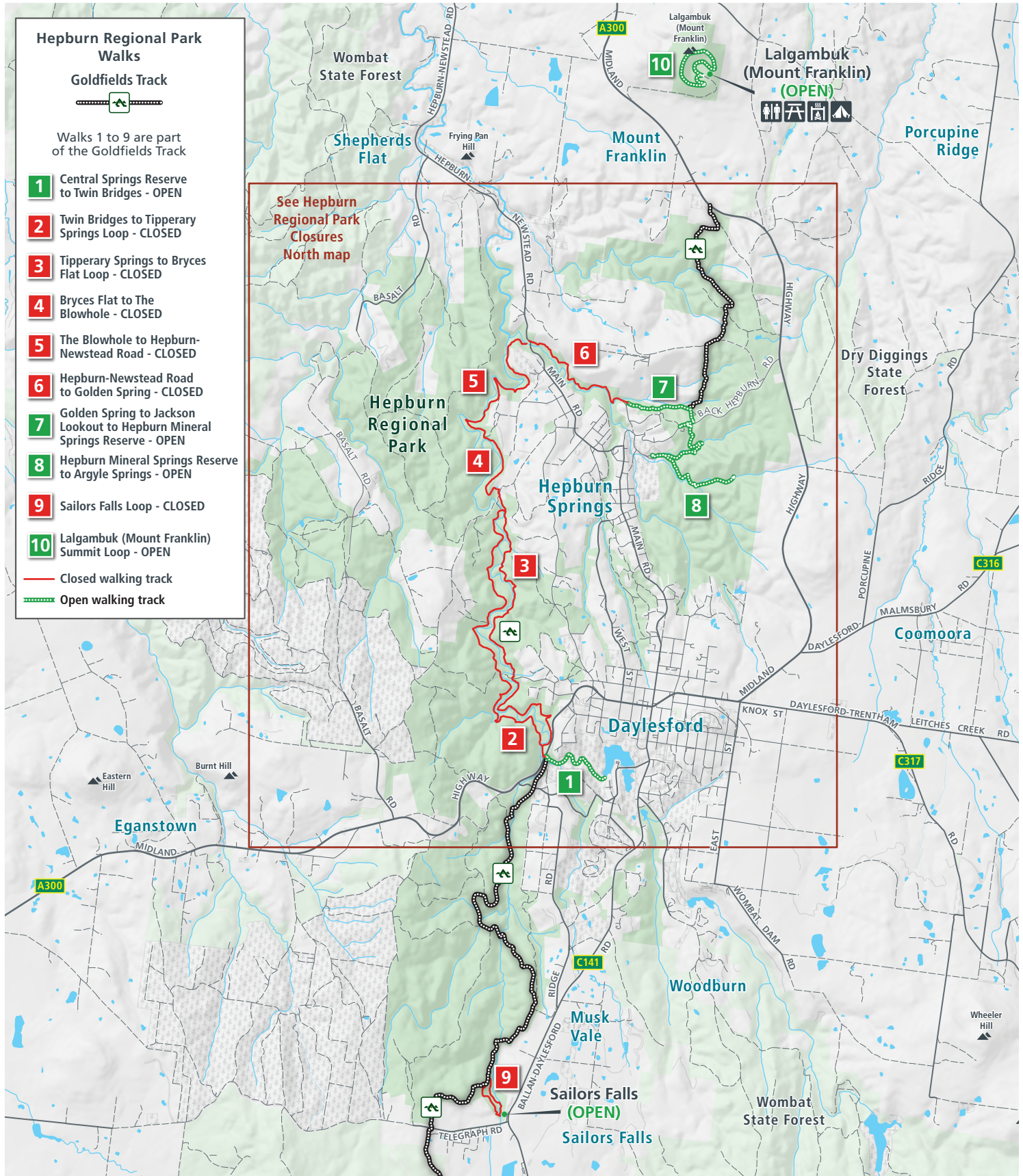
Some examples of damage directly after the storm.

Above left: Wombat Creek Bridge damaged from water and debris, this will require a structural assessment to ensure it is safe.

Above: Walking track between Tipperary Springs and Twin Bridges, loss of structural integrity and weakened soil from the heavy rains. If not addressed this could cause a landslide and further damage to the trail. This will require a technical assessment.

Hepburn Regional Park Closures

Overview

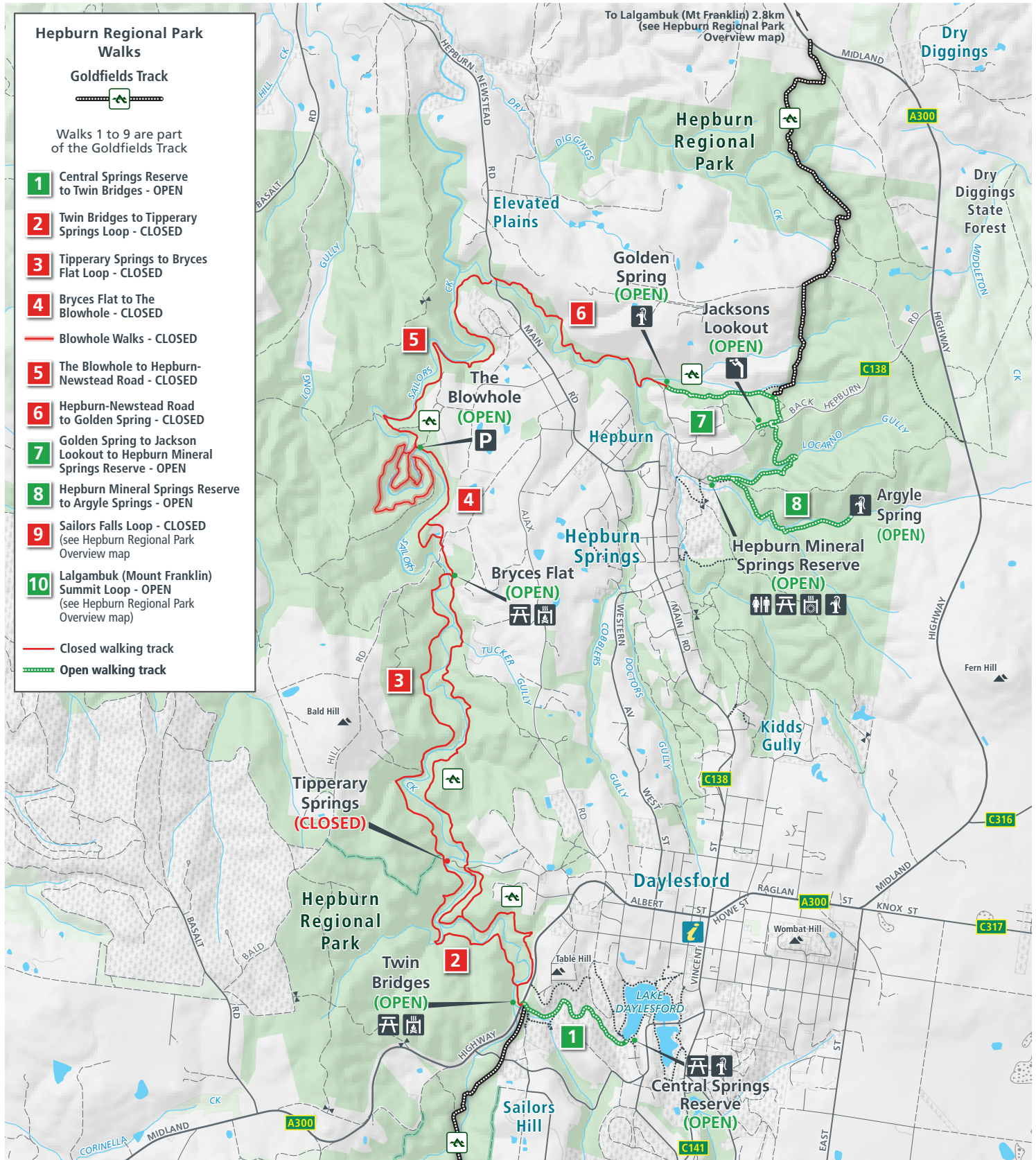


- Toilet
- Picnic
- BBQ (wood)
- Camping
- Highway
- Main road
- Sealed road
- Unsealed road
- Hepburn Regional Park
- Other reserve
- Softwood plantation



Hepburn Regional Park Closures

North



- ### Hepburn Regional Park Walks
- Goldfields Track**
- Walks 1 to 9 are part of the Goldfields Track
- 1** Central Springs Reserve to Twin Bridges - OPEN
 - 2** Twin Bridges to Tipperary Springs Loop - CLOSED
 - 3** Tipperary Springs to Bryces Flat Loop - CLOSED
 - 4** Bryces Flat to The Blowhole - CLOSED
 - 5** Blowhole Walks - CLOSED
 - 6** The Blowhole to Hepburn-Newstead Road - CLOSED
 - 7** Hepburn-Newstead Road to Golden Spring - CLOSED
 - 8** Golden Spring to Jackson Lookout to Hepburn Mineral Springs Reserve - OPEN
 - 9** Hepburn Mineral Springs Reserve to Argyle Springs - OPEN
 - 10** Sailors Falls Loop - CLOSED (see Hepburn Regional Park Overview map)
 - 11** Lalgambuk (Mount Franklin) Summit Loop - OPEN (see Hepburn Regional Park Overview map)
- Closed walking track
 - - - Open walking track

- P** Parking
- Toilet
- Picnic
- BBQ (Electric)
- BBQ (Wood)
- Mineral spring
- Lookout
- Visitor information
- Highway
- Main road
- Sealed road
- - - Unsealed road
- - - 4WD track
- - - - - Walking track
- - - - - Seasonal Closure
- Gate
- Hepburn Regional Park
- Other reserve
- Softwood plantation

