

Little Desert National Park

Kiata Campground Walks

Walking notes



Dalkaiana Wartaty – Welcome. The Wotjobaluk, Jaadwa, Jadawadjali, Wergaia and Jupagulk peoples (collectively Wotjobaluk), the Traditional Owners of this land - welcome you to country. This semi-arid landscape with a variety of habitats is home to a rich and diverse array of native flora and fauna.

Three loop tracks starting at Kiata Campground offer you the opportunity to discover a wonderful diversity of vegetation from Stringybark woodlands to sandy open-heath.



Getting there

The Kiata Campground is in the Little Desert National Park, approximately 375km north-west of Melbourne.

Booking is not required and no fees apply at this campground. Basic facilities, pit toilets and wood fireplaces are provided.

A rich history, both Aboriginal and European

The Wotjobaluk people lived and hunted along the Wimmera River and nearby woodland plains for thousands of years, where food, shelter and water were plentiful. The Woraigworm Pastoral run covered the Kiata area late in the 19th century and grazing continued up until the 1960's.

The clearing of Box and Yellow Gum trees to be used for fences and other domestic purposes has left most of the trees in the campground with several trunks, rather than the single one of their original state.

Walking

Be prepared: The tracks are on sandy ground. Wear a hat, sunscreen and carry drinking water and a mobile phone for emergencies.

Discover some of the features of the desert including spring wildflowers and other plants, animals and history on these walks. Its heathlands are renowned for their spring flowers, including many types of native orchid and there are over 200 bird species recorded.

1. Red Gum Loop – 2.3km, 1 hour return

This walk starts at Kiata Campground before turning east onto a sand rise that meanders through brown Stringybark woodland. From here you will cross a channel. The level that the water has reached during periods of rare flooding in this area can be seen by the water marks on the Red Gums.

You will then reach the Eucalyptus Distillery Site which closed in 1907. From here the track leads north over a small Banksia-covered dune and back into a Red Gum and Black Box woodland. It is then an easy stroll back to Kiata Campground.

2. Albrechts Mill Loop – 4km, 1 hour 45 minutes return

This pleasant walk takes you through a diverse array of vegetation including areas of Silky Tea Tree, Stringybark, tall Broom-bush and Mallee. The walk makes its way south-easterly before meeting with the **Pump Jack Track**. Here you will make your way along the vehicle track until you reach the historic Albrecht's Mill. There is an information board located. Continue walking along the track that will take you in a northerly direction back to Kiata Campground.

3. Trig Point Loop– 11km, 4.5 hours return

This walk will take you in a south-westerly direction through thick Stringybark scrub. From here you will make a slow ascent up onto a sandstone ridge; follow this until you reach the Trig Point Lookout. The Trig Point is a remnant of days gone by when the early surveyors used high points, on rises and hills such as this one, as benchmarks from which they could obtain bearings.

The 360-degree viewing platform gives walkers the opportunity to experience the raw beauty of the desert's open surroundings. You can see stunning Mount Arapiles in the distance.

The Desert Discovery Walk – 74km, 1-4 nights

This long distance walk crosses the sections of the park and passes through the Kiata Campground walks in some sections. For prepared walkers during winter, spring and late autumn it is a good opportunity to see the park on foot, staying overnight in the walker's camps.

Little Desert Discovery Walk Track Notes and Trip Intention Form

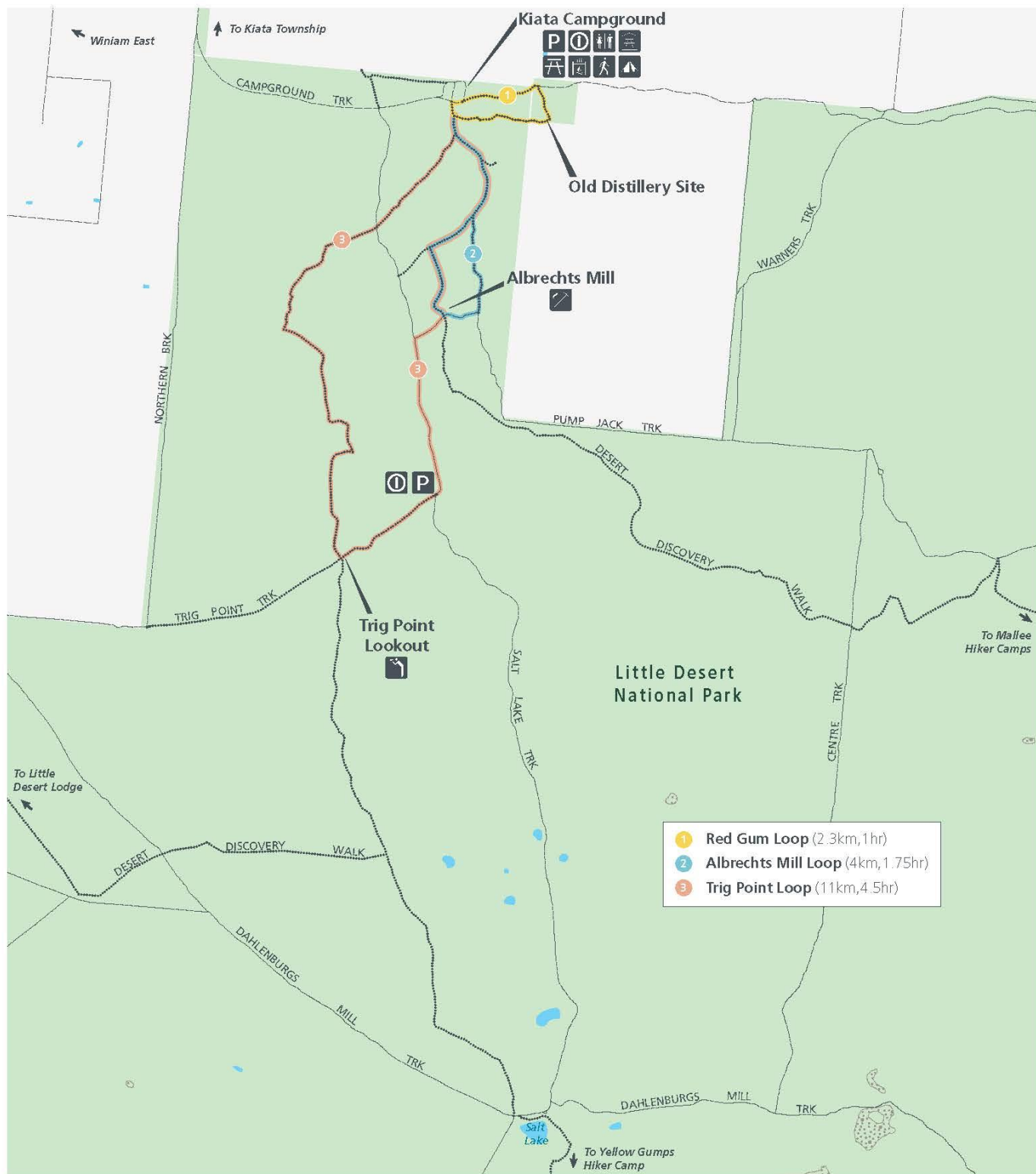
can be found at www.parks.vic.gov.au and overnight walkers are asked to register their details a week in advance at LittleDesertDiscoveryWalk@parks.vic.gov.au

Be prepared and stay safe

For emergency assistance call Triple Zero (000). If there is a green emergency marker sign near you, read the information on the marker to the operator. Little Desert National Park is in the Wimmera fire district. Bushfire safety is a personal responsibility. Anyone entering parks and forests during the bushfire season needs to stay aware of forecast weather conditions. Check the Fire Danger Rating and for days of Total Fire Ban at www.emergency.vic.gov.au, on the VicEmergency smartphone app or call the VicEmergency Hotline on 1800 226 226. No fires may be lit on Total Fire Ban days. On Catastrophic Fire Danger Rating days this park will be closed for public safety. Warnings signs may be erected, but do not expect a personal warning.

Check the latest conditions at www.parks.vic.gov.au or by calling 13 1963.

Revised January 2020



- 1 Red Gum Loop (2.3km, 1hr)
- 2 Albrechts Mill Loop (4km, 1.75hr)
- 3 Trig Point Loop (11km, 4.5hr)

Parking	Wood barbecue	Unsealed road	Little Desert National Park
Information	Walking tracks	4WD	Area subject to inundation
Toilets	Lookout	Walking track	Waterbody
Sheltered area	Camping area		
Picnic table	Mill		

www.parks.vic.gov.au
 Disclaimer: Parks Victoria does not guarantee that this data is without flaw of any kind and therefore disclaims all liability which may arise from you relying on this information. Cartography by Parks Victoria June 2018
 For mobile App search for Avenza PDF Maps

