

# Werribee Park

## Visitor Guide



Enjoy the perfect day out at Werribee Park. Experience the grandeur of Werribee Mansion, discover Victoria's unique pastoral history at the farm and homestead, relax with family and friends on the Great Lawn surrounded by stunning formal gardens and so much more.

Located just 30 minutes from Melbourne by car, Werribee Park is so easy to get to and entry to the gardens is free.



### Opening hours

Werribee Park is open daily, including weekends and public holidays. Entry to the gardens is **free**. Mansion entry fees apply.

- Car park opening:
  - o 9am – 5.30pm (non-daylight savings) o 9am – 6.30pm (daylight savings) - Mansion opening:
  - o 10am – 4pm weekdays (until 5pm weekends and public holidays) (non-daylight savings)
  - o 10am – 5pm (daylight savings)

Werribee Park hosts a large range of weddings and high profile events with may affect accessibility and cause temporary closures. For up-to-date information on park accessibility please call Parks Victoria on **13 1963** or visit [www.parks.vic.gov.au](http://www.parks.vic.gov.au).

### Getting there

Address: Gate 2, K Road, Werribee, VIC 3030.

Werribee Park is located 30 minutes' drive from Melbourne CBD. Enter via Gate 2 from K Rd.

The car park is located outside the Victoria State Rose Garden, 300m from the Mansion.

If using public transport, take the Werribee line train to Werribee Station, then take bus route #439 to Werribee Park.

You can also get her by bicycle by following the Werribee River Park trail to Werribee Park.

### Things to see and do

#### Formal gardens

Escape the hustle and bustle of everyday life within the idyllic gardens of Werribee Park. The ten hectares of manicured landscape contain a variety of exotic species combined with Australian natives.

#### Parks Victoria

13 1963

[parks.vic.gov.au](http://parks.vic.gov.au)

Share a picnic with family and friends as you look out across the colourful parterre, ornamental lake and grotto. Children and adults alike will love roaming free across the lush lawns.

#### Tour the Mansion

Step back in time as you enter the opulent Mansion. Built in the Italianate architecture style, Werribee Mansion boasts 60 rooms in several wings.

Discover the story behind the success of the Chirnside family who first owned and built the property in 1877 and learn what it was like to live in the Victorian era with an insightful and entertaining audio tour. Following extensive restoration, many of the Chirnside family's items, including clothing and furniture remain on display.

#### Victoria State Rose Garden

Winner of the prestigious World Federation of Rose Societies Award for Garden Excellence, this internationally acclaimed garden is a must see.

Delight in the colour and fragrance of over 5000 roses, displayed to perfection, in bloom from October to May and at their most magnificent from November to April.

The Victorian State Rose Garden is tended by the Victorian State Rose Garden Supporters, a dedicated group of over 100 volunteers.

#### Mansion Cafe

Sit back and relax after a day exploring Werribee Park at the Mansion Café. Enjoy delicious refreshments while you take in the beautiful view of the formal gardens surrounding the Mansion.

#### Scenic Walk

A pleasant walk with views of the Werribee river and Heritage Orchard. Travel to the river transcending the restored church steps and wander through the Heritage fruit orchard to the farm.

## Farm and Community Garden

Stroll down to the original farm where rustic bluestone outbuildings, once abuzz with workers and activity, provide a stark contrast to the luxury of the Mansion.

The area has now been revitalised by the local community and provides a modern centre for gardening and horticultural activity.

## Riverine

The riverine is a natural and cultural treasure. Located near the original farmyard, this unique area encompasses the Werribee River, acres of native woodlands and a flourishing orchard.

Wander down to the tranquil riverine where Parks Victoria is working closely with the Wurundjeri and other local community groups to ensure that the natural and cultural history of this unique area is protected and enhanced for the benefit of generations to come.

Look out for the rich wildlife living here. You may spot a dulaiwurrong (platypus) at play, a bundabun (longneck tortoise) basking in the sun or an iuk (eel) rippling through the reeds.

## Volunteering

Several groups work at Werribee Park. Please call 13 1963 for information on activities, groups, and their contact details.

## Werribee Park Tourism Precinct

There's so much more to see and do while you're at Werribee Park:

- Indulge yourself at the **Mansion Hotel & Spa** and **Joseph's Restaurant**
- Savour award winning wine at **Shadowfax Winery**
- Create your perfect wedding at **The Refectory**
- Enjoy the many equestrian events at **Werribee Park National Equestrian Centre**
- Discover the wild life on safari at **Werribee Open Range Zoo**
- Tee off at **Werribee Park Golf Club**

## Facilities

Gas barbecue facilities are available for use near the main car park, however these cannot be used during days of total fire ban. Portable barbecues are allowed in the barbeque area only, and charcoal barbecues must be placed on gravel pads.

Car parking is located 300m from the Mansion.

Toilet facilities are located at the Mansion near the Refectory, at the farm outbuildings, next to the barbecue area and at the main entrance to the formal gardens.

2

## Accessibility

All abilities access is provided throughout the park, including accessible toilets.

Paths throughout the formal gardens are level granitic tracks.

Prams are not permitted in the Mansion.

## Be prepared and stay safe

In an event of emergency dial 000.

Be fire ready and stay safe. For updated information on Fire Danger ratings or general safety advice please call the Victorian Bushfire Information line on 1800 240 667, listen to a local ABC/ACE radio station or visit [www.emergency.vic.gov.au](http://www.emergency.vic.gov.au).

On severe high wind days, the park may be closed. Please call ahead or check online for information if storms are predicted.

## Conditions of entry

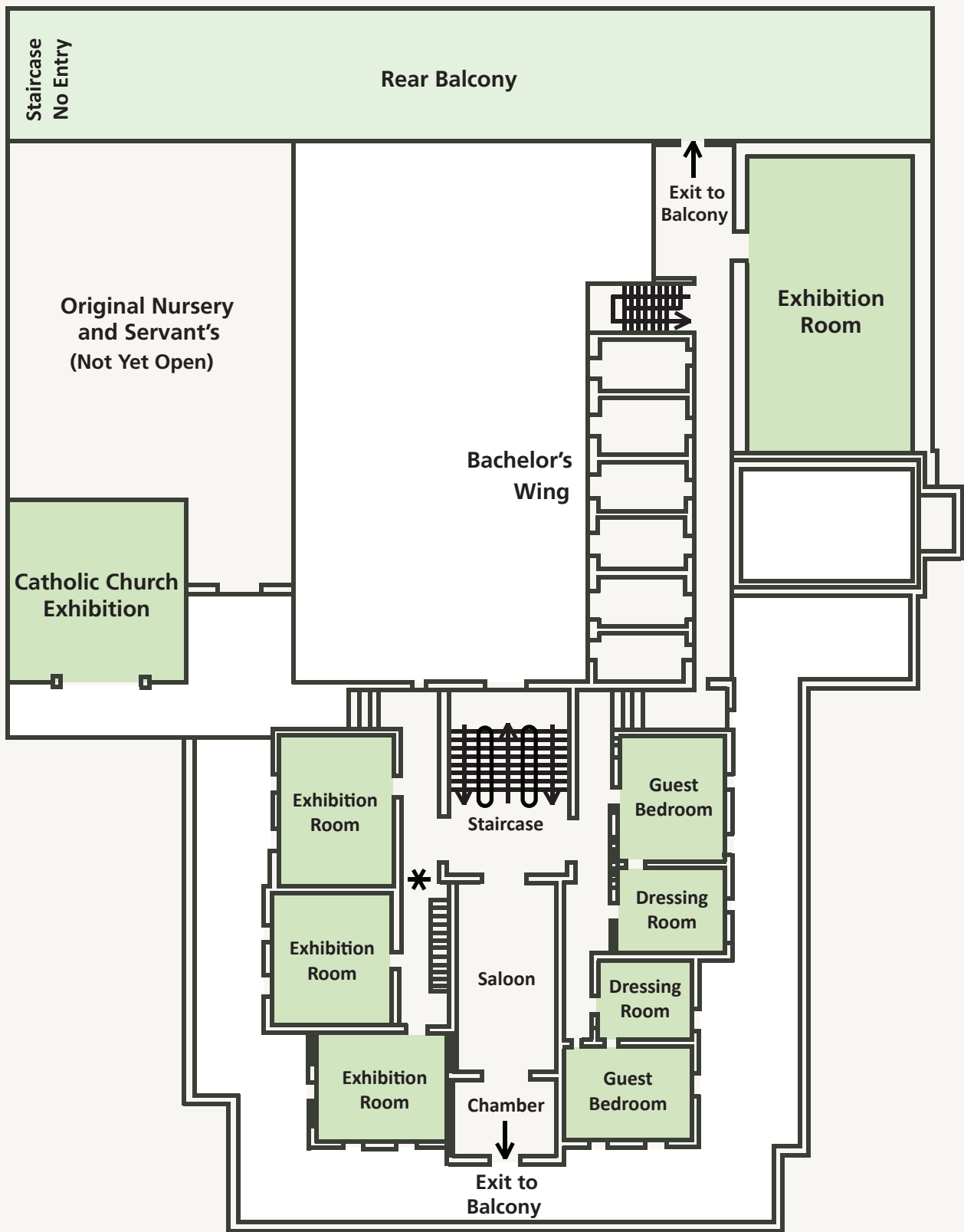
Help us look after Werribee Park by remembering these points:

- Place your rubbish in the bins provided or take it with you
  - Animals and pets are not permitted. Please do not leave them in your car
  - Entering garden beds and picking flowers is not permitted
  - Bicycles must be walked through the formal gardens
- Be considerate of other visitors when using balls, games, stereos etc

Permits from Parks Victoria are required for the following activities:

- All events and professional entertainment
- Weddings, including ceremonies, photography and receptions are by booking only and require a permit
- All professional or commercial photography
- Installing any infrastructure in the park
- Any drone activity
- Any other commercial activities

# First Floor



\* Access to Tower - by guided tour only

# Ground Floor





- |                  |           |            |                                 |
|------------------|-----------|------------|---------------------------------|
| Parking          | BBQ - Gas | Road       | Victoria State Rose Garden Walk |
| Toilets          | Lookout   | Fence      | Scenic Walk                     |
| Disabled toilets | Stairs    | Escarpment | Formal Garden Walk              |
| Picnic shelter   | Bus stop  | Vineyard   | Farm & Riverine walk            |
| Picnic table     | Building  | Parking    | Walking track                   |