

Victorian Notice to Mariners

The following Notice to Mariners is published for general information.

27 April 2026
Victoria - Australia

No. 238(T) – 2026

Local Port of Port Phillip

Mordialloc Creek
Rail Bridge Dive Inspection Works

Date: **Tuesday 28 April 2026**

Details: Mariners are advised of dive inspection works at Mordialloc Creek Rail Bridge, at approximate location (WGS84): 38°0.627'S, 145°05.413'E, on the date noted above. The works will involve divers and work vessels operating under the bridge within an exclusion zone to enable safe works.

The exclusion zone will close the northern bridge span from approximately 0700hrs to 1130hrs. Vessel through traffic will be available via the southern span as outlined by exclusion zone buoyage, as shown in map 1 below.

The works will then progress to the southern bridge span, which will be closed from approximately 1130hrs to 1600hrs. Vessel through traffic will be available via the northern span as outlined by exclusion zone buoyage, as shown in map 2 below.

Mariners are advised to navigate with caution and no wash within the vicinity of the Mordialloc Creek Rail Bridge and obey all speed limits and signage.

Relevant Law: The exclusion zone has been established under the *Marine Safety Act 2010*. All vessels are prohibited from entering the exclusion zone, excluding vessels involved directly in the works and Parks Victoria vessels.

Charts & Publications

Affected: AUS 143, AUS 155, AU439145.

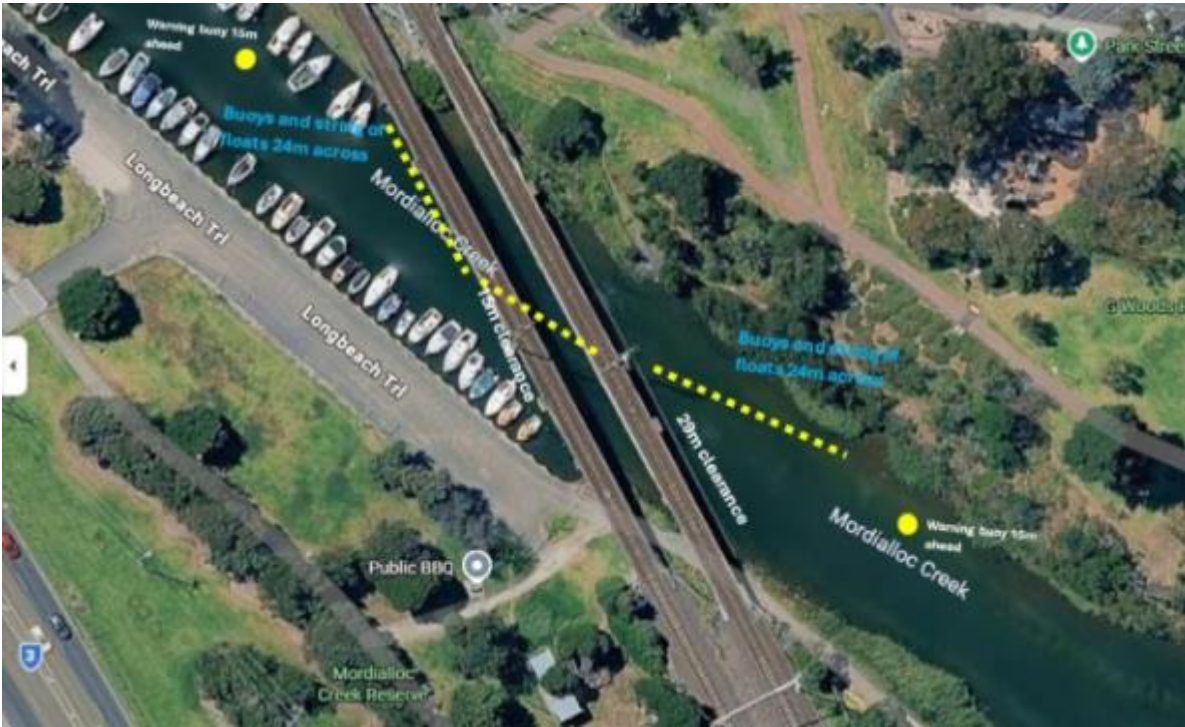
Further Notice: This Notice is self-cancelling. No further Notice will be issued.

If you require any further information, please contact Metro Trains Melbourne on 1800 800 007.

Chris Anderson
Moorings and Port Service Operations Manager
Maritime and Waterways Operations

If you wish to receive Parks Victoria issued Notice to Mariners, please email your details to noticetomariners@parks.vic.gov.au. To view Notices, visit www.parks.vic.gov.au

Map 1. Vessel Traffic Management for Northern bridge span works



Map 2. Vessel Traffic Management for Southern bridge span works

