

UNOFFICIAL

Port Management Act 1995 (Vic.)
Port Management (Local Ports) Regulations 2015
Set Aside Determination – Regulation 11(1)
Local Port of Western Port

I, Graeme Davis, District Manager Port Phillip Western Port District of Parks Victoria (as delegate of the Port Manager), determine under Regulation 11(1) of the *Port Management (Local Ports) Regulations 2015* that the areas defined in the following table are set aside for the purposes and conditions specified.

This determination has been made in accordance with Regulation 11(2)

- (a) in the event of, or in anticipation of, any fire, flood, natural disaster or other emergency; or
- (b) if the port manager reasonably believes that there is imminent risk of—
 - (i) harm or damage to—
 - (A) the health or safety of any person; or
 - (B) local port facilities or other property; or
 - (C) the natural environment; or
 - (ii) significant interference with the safe, efficient and effective management of the local port.

In accordance with Regulation 11(4), this determination replaces any previous set aside determination made by the port manager in respect of that area or any part thereof of that area for the period specified in this temporary determination.

This determination applies from 6:00am until 3:00pm on Saturday 22 March 2025.

Signed at Melbourne



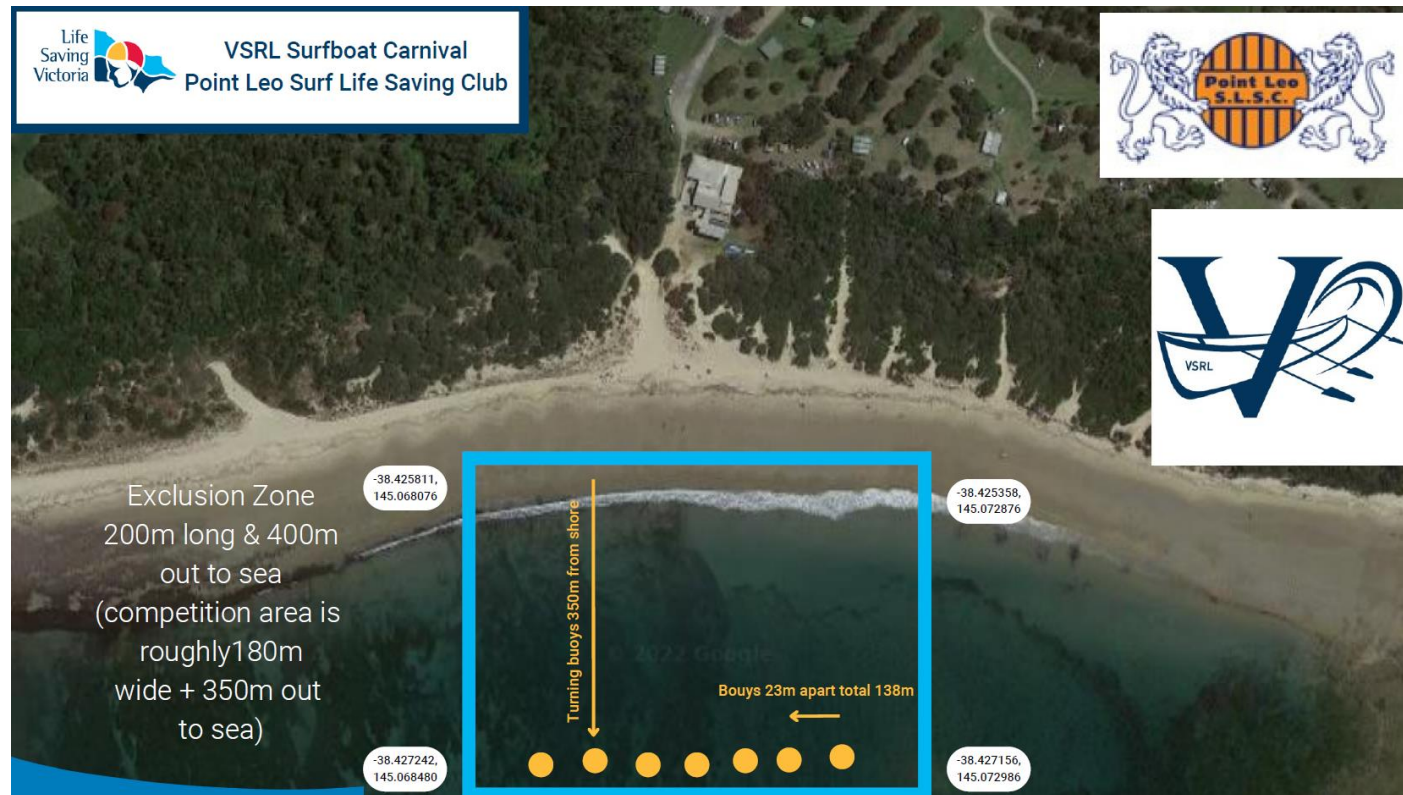
by Graeme Davis
District Manager Port Phillip Western Port District

on 24/09/2024

UNOFFICIAL

UNOFFICIAL

Regulation	Description	Purpose	Area	Reasonable conditions (Regulation 14)
11(1)(a)	Determination to set aside an area in a local port in which access to that area is prohibited or restricted for not more than 90 days.	To set aside an area for the safety of participants and vessels competing in the Life Saving Victoria VSRL Surf Boat Carnival #8	That area of Western Port Bay adjacent to the Life Saving Club clearly marked by flags on shore, and in the water by buoys extending up to 400 metres from shore to the below approximate locations (WGS84): 1) 38°25.6345'S, 145°4.1088'E 2) 38°25.6294'S, 145°4.3792'E	Mariners are requested to avoid the competition area during the Set Aside period and follow the direction of event marshals and safety personnel.



UNOFFICIAL

Declaration:

Port Management Act 1995 (Vic.)
Port Management (Local Ports) Regulations 2015
Set Aside Determination – Regulation 11(1)
Local Port of Western Port

As the Port Manager of Western Port, Parks Victoria has set aside an area of Western Port to facilitate the VSRL Surf Boat Carnival #8 organised by Life Saving Victoria on Saturday 22 March 2025 between 6.00am and 3.00pm in the waters off Point Leo, Western Port Bay. The set aside prohibits all persons entering the area between times and dates as outlined. The full declaration including event information is available on Parks Victoria's website.

By Order Parks Victoria.

Date: 24/09/2024

UNOFFICIAL