

Community Update

Bunyip State Park Fire Recovery

November 2019
Issue 4

Parks Victoria is pleased to announce that sections of Bunyip State Park have officially re-opened and are ready for you to come and enjoy once again. Some sections of the park will remain closed while we undertake works to make the area safe again. Please see the map on the next page which identifies the areas that are currently open.

Staged re-opening of Bunyip State Park

We are pleased to announce that two popular areas, Mortimer Picnic Ground and Cannibal Creek Horse Unloading Area, were re-opened on the 30th November. This will provide access to approximately 35 kilometres of tracks for bushwalking and horseriding in the western section of the park. As part of the rehabilitation of the park, new fire pits and tables have been installed at Mortimers and the area will now be open to camping for the first time since the March fires.

Other areas of the park are continually monitored and assessed and will be opened in stages.



Parks Victoria continues to work closely with Victoria Police to patrol the park and issue fines to those caught committing offences.

Environmental recovery

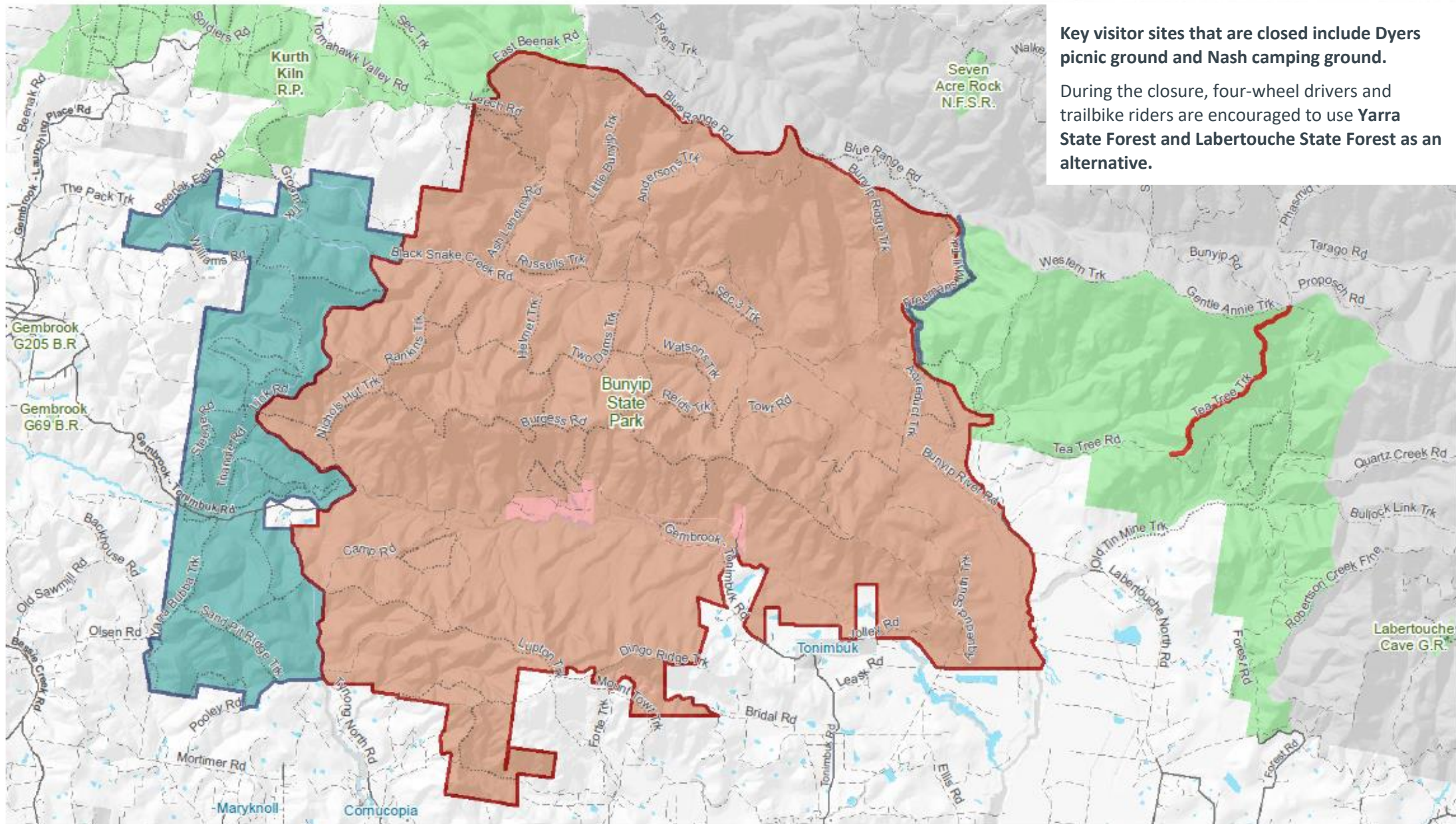
Spring brought some colour back to the burned areas of the bush, with several orchid species blooming in the park and grass trees shooting up.

Damage and illegal entry

Parks Victoria appreciates your patience as we work our way through the park to make new areas safe for you to use. People continue to break through closure gates to enter areas that are still regenerating from the fires and are not safe to access. Parks Victoria local Rangers continue to repair and replace gates to maintain closure points for your safety. This is time rangers would much rather be spending making further areas of the park safe and restored for you to use.

The entry into closed sections of the park is also impacting on the regenerating vegetation and causing damage to the road and track network which is creating erosion and silt runoff into water courses.

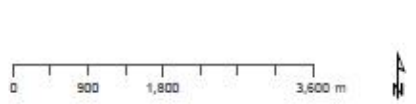




Key visitor sites that are closed include Dyers picnic ground and Nash camping ground.

During the closure, four-wheel drivers and trailbike riders are encouraged to use Yarra State Forest and Labertouche State Forest as an alternative.

Bunyip State Park - Closure Information



- Area now open
- Area closed for bushfire recovery (open date TBD)
- Track Open
- Track Closed



Disclaimer: Parks Victoria does not guarantee that this data is without flaw of any kind and therefore disclaims all liability which may arise from you relying on this information.
 Date source acknowledgements: State Digital Mapbase, The State of Victoria and the Department of Environment, Land, Water and Planning